

SENEBOGEN

MATERIAL HANDLER

822G



 Mobile 22 t /  Crawler 24.3 t /  10 m /  109 kW /  Stage V

822 G

The recycling specialist.

Robust solution for harsh environments – with a reach of up to 10 m and an elevating comfort cab as standard across the series, the compact 822 G material handler is the specialist for recycling and scrap. Keep track of all loading and sorting activities and benefit sustainably from the machine's intelligent and resource-saving design.

Maximum efficiency

High system performance coupled with optimized hydraulics for outstanding efficiency.

Occupational safety

Thanks to the precisely controlled movements and the numerous safety features, you can work effortlessly and safely throughout your day.

Maximum comfort

The spacious cab is designed with the needs of the operator in mind – comfortable and spacious with sophisticated features.

A long-term investment

The G-series is characterized by robust components and intelligent machine design – the machine retains its value over the long-term, even with demanding continuous use.

Maintenance & service

Intelligent fleet management and machine status monitoring via the SENtrack portal as well as unique accessibility of machine components.

Modular variety

Unique machine variety – we build the perfect machine to meet the needs of your application.



AN INVESTMENT THAT PAYS OFF.

The durability and reliability of the SENNEBOGEN Green Line is based on decades of experience in the design of high-quality crane and material handling technology. You want to handle recycling in an especially environmentally friendly and economical way – we have the perfect solution for you.

LATEST GENERATION MATERIAL HANDLING TECHNOLOGY

The **G** series.



Low operating costs thanks to Green Efficiency Technology: fuel efficient and longer maintenance intervals



Manageable and service-friendly technology for maximum machine availability



Consistent performance thanks to robust steel construction, and high-quality drive and control components from renowned manufacturers



Maximum efficiency thanks to powerful pumps, large-scale hydraulic valves and pipes



Sophisticated technology thanks to the consistent further development up to the 6th generation, the G-series – for demanding material handling



Durable and robust in extreme weather and harsh operating conditions, works equally well in the cold of the Arctic Circle or the heat of Dubai



Advanced. The **G**-Series.



LONG SERVICE LIFE, HIGH VALUE RETENTION

- Reliable and powerful thanks to its robust construction and high-quality components
- Temperature-controlled cooling system, designed and tested for heavy-duty applications and high ambient temperature

SOPHISTICATED, STATE-OF-THE-ART TECHNOLOGY

- Consistently optimized for the demanding material handling
- Increased efficiency thanks to G series hydraulics: optimized hose and pipe routing

SIMPLE TO MAINTAIN AND SERVICE

- Manageable technology and no over-engineering
- Ideal accessibility to all components for easy maintenance

ENVIRONMENTALLY-FRIENDLY DRIVE TECHNOLOGY

- State-of-the-art engine, drive and emission systems in line with the latest technology standards (stage V)
- Right-sizing of the engine through efficient energy recovery technology: powerful and low-consumption

SAFETY FIRST.

Enjoy a safe work environment thanks to numerous safety features developed especially for port and scrap yard use. Protecting people, the environment and the machine.



Component safety

maximum service life thanks to the robust steel construction – produced in our very own subsidiary

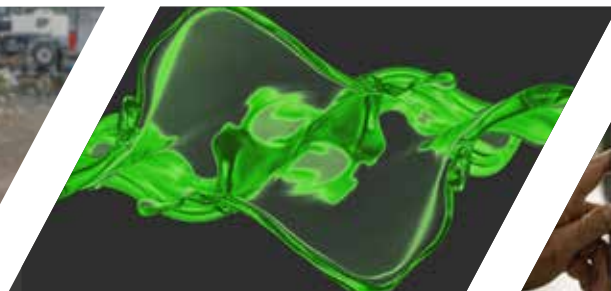
Safe & ergonomic

optimum cab and machine component accessibility via stairs and ascents



Best 360° visibility with maximum safety

Thanks to bulletproof glass and panoramic view due to the removal of the B-pillar



Biodegradable oil

With safe environmental compatibility



SENtrack

Maintain fleet management safety by monitoring the condition of your machines



Powerful LED spotlights

for optimal illumination of the work area



Folding lubrication system

Optimal accessibility, reachable from the ground for easy maintenance and filling



Optimal camera monitoring

of all safety-relevant areas*

EXPERIENCE VARIETY

SENSITIVITY AND SPEED WITH EVERY SORTING AND LOADING TASK

Tailored to your application, whether scrap or bulk material: Thanks to the high-performance hydraulics of SENNEBOGEN material handlers and their especially sensitive steering, you can handle various types of materials quickly and reliably.



Sorting grab (SGR)



Orange peel grab (SGM), shell form half-open, for e.g. sheet metal waste



Timber grab (SGH)



Sorting grab (SGR)



Magnet with quick coupler



Orange peel grab (SGM), closed shell form, for e.g. metal shavings

SENNEBOGEN GRAB CATALOG

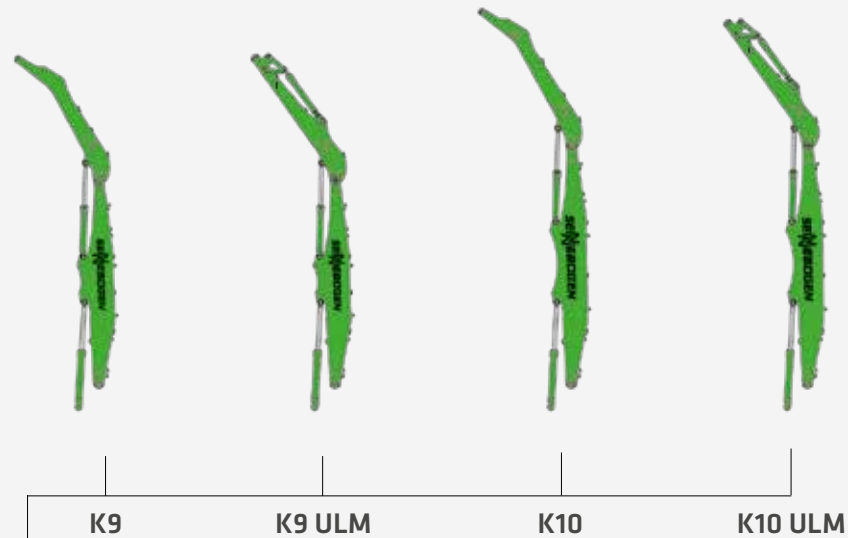
www.sennebogen.com/grabs

A MODULAR DESIGN. NUMEROUS APPLICATIONS.

WHAT DOES YOUR MACHINE LOOK LIKE?

EQUIPMENT

-  Orange peel grab
-  Clamshell grab
-  Magnet
-  Sorting grab

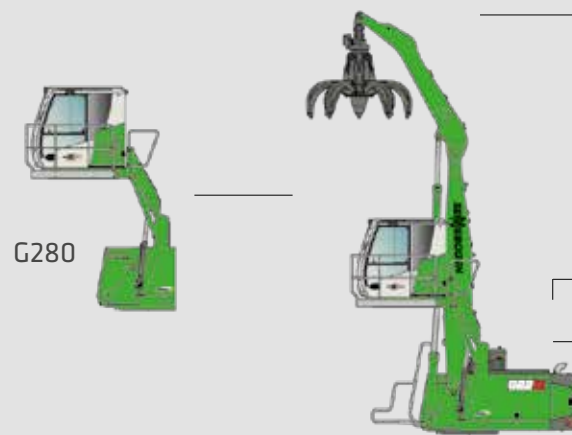




K = Compact boom
ULM = Equipment with tipping kinematics, e.g. for sorting grabs

CAB

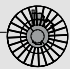

CAB ELEVATION

-  Maxcab
-  Maxcab Industry



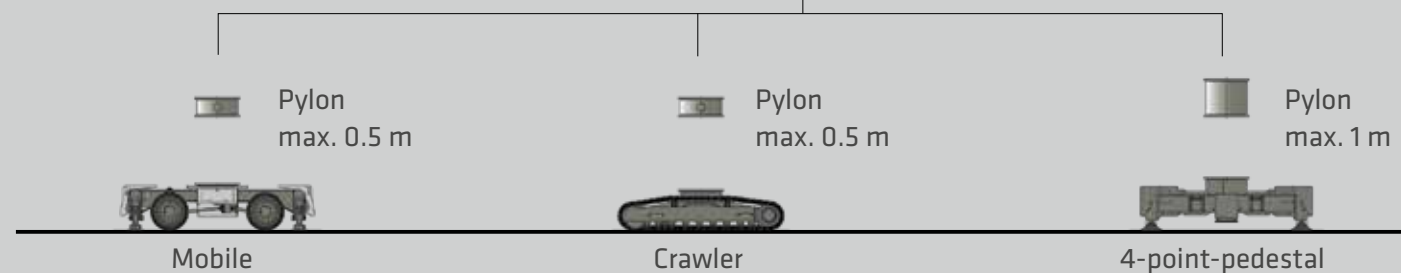
-  Diesel-hydraulic drive
-  Electrohydraulic drive

OPTIONS

-  Motorized cable reel
-  Transformer

UPPERCARRIAGE

UNDERCARRIAGE



Configure your individual machine from our modular system. The great variety of solutions that we can implement in this way is unique anywhere in the world.



CUSTOM CONFIGURATION

More than 16,000 unique material handling solutions can be delivered through SENNEBOGEN's modular machine design - watch the video now!

www.sennebogen.com/versatility



MAXIMUM COMFORT.

Everything in view

The spacious cab with panoramic view gives you a practical overview of your work area. The safety cameras provide support and allow you to monitor the critical areas conveniently via the monitoring system in the cab.

Easy control

The intelligent SENCON control system gives you quick and easy feedback on the machine's condition. Thanks to the intuitive user interface, it has never been easier to monitor energy consumption and utilization, control the desired working modes and contribute towards reducing operating costs.

Pleasant indoor climate

Whether in warmer areas or sub-zero temperatures, you can enter a work space with a comfortable temperature every day and concentrate on the essentials of work thanks to pleasant heating and air conditioning.

Individual operator profiles

Personalize and save settings for individual operators: climb in – get going.

For your health

The back-friendly comfort seat with reinforced suspension, adjustable armrests and optimally arranged control elements make everyday work even easier. With the convenient control panel, you can now reach many functions even faster and the ergonomic joysticks are comfortable to hold – in an award-winning design!

“With the new Maxcab, we have once again implemented customer requirements: for maximum ease of use.”

CORNELIUS STROBL,
Head of the Scrap and Recycling Business Unit



THE NEW MAXCAB

Unobstructed visibility
Bullet proof windscreen in series
Intuitive operation



CAB HIGHLIGHTS



ALWAYS THE RIGHT VIEWING ANGLE

With the new **cab elevation**, the operator not only receives a great increase in viewing height for maximum safety and overview: Thanks to the extremely **robust design**, it also guarantees quiet and fatigue-free operation even during fast movements.

IN SERIES		Maxcab	Maxcab Industry
ENTRANCE		Sliding door incl. sliding window	Sliding door incl. sliding window
WINDSHIELD		Optimal field of vision, bullet proof glass	Undivided windshield made from bullet proof glass, rigidly glazed
SKYLIGHT		Safety glass skylight	Bullet proof skylight
PLATFORM		Platform with railing for safe access	Platform with railing for safe access
WIPERS		Wipers for skylight	Wipers for skylight
		Wiper and washer system for front windshield	Wiper and washer system for front windshield
AIR CONDITIONER		Heating/air conditioning system with fresh air and recirculating air filter	Heating/air conditioning system with fresh air and recirculating air filter
FLOODLIGHTS		Powerful LEDs, integrated in the roof	Powerful LEDs, integrated in the roof
RADIO PREPARATION		✓	✓
SENCOR CONTROL AND DIAGNOSTIC SYSTEM		✓	✓
OPTIONS			
RADIO		DAB, with MP3 and Bluetooth® function, hands-free system	DAB, with MP3 and Bluetooth® function, hands-free system
AIR-CONDITIONED SEAT		✓	✓
PROTECTIVE VENTILATION SYSTEM		✓	✓
COOLING BOX BEHIND THE OPERATOR'S SEAT		✓	✓
PROTECTIVE GRILLE ON SKYLIGHT AND WINDSHIELD		✓	✓
SUN PROTECTION PACKAGE		✓	✓



Viewing height (G280)
5.8 m

G SERIES
STANDARD
EQUIPMENT

PROFESSIONAL FLEET MANAGEMENT

SENtrack

1. Reduce service costs

The dashboard is used to monitor the machine and its main operating parameters (temperatures, consumption). If key figures deviate significantly from the target value, the user is informed immediately.

2. Reduce consumption

You will receive daily updated insights into your fleet processes: easily identify and optimize times when machines are idle or change set parameters when machines are underloaded to reduce consumption.

3. Improve productivity

With just a few clicks, you can identify and optimize machine capacity, analyze routes if required and thus make your port processes more profitable.

4. Safeguard your investment

Practical alarm messages inform you about critical machine conditions. In the event of irregular movements, the machine can also easily be deactivated remotely.



“What if you could receive real-time data from all your machines with just one click and so increase your productivity? SENNEBOGEN’s SENtrack telematic system makes this possible. The monitoring tool is installed as standard in the G series!”

MAINTENANCE AND SERVICE.

KEEP IT SIMPLE. WITH MANAGEABLE TECHNOLOGY.



Reliable and practical technology makes life easier. We rely on hydraulics, electrics and electronics only where they provide the greatest benefit.



We make you happy, not reliant. With cost-effective components and fewer process steps, you can take care of your own machine.



The central electrical distributors and electronic modules facilitate maintenance and service, and are protected against environmental influences thanks to the large-scale e-box.



The SENCON control system supports you with diagnostics so that your machine is back in action more quickly.

All maintenance and service points are clearly arranged and easily accessible. The clear labeling of components makes finding your way around easy.

TECHNICAL DATA, EQUIPMENT

MACHINE TYPE

MODEL (TYPE) 822 G

DIESEL ENGINE

TYPE	Stage V: Cummins F 3.8* Rated power: 110kW/2200 rpm Operating point standard: 109 kW/2000 rpm Operating point ECO: 99 kW/1600 rpm Automatic idle/stop
COOLING	Water-cooled, charge air cooling, coolant cooling
DISPLACEMENT	3.8 l
NUMBER OF CYLINDERS	4
BATTERIES	2 x 110 Ah / 750 A, battery disconnect switch
ELECTRICAL SYSTEM	24 V
OPTIONS	Engine block heater Electric fuel pump Jump start pole Cyclone pre-separator for use with high dust loads

TANK CAPACITIES

FUEL	330 l
ADBLUE	30 l
HYDRAULIC TANK	240 l
COOLANT	approx. 40 l
ENGINE OIL	approx. 13.5 l
CENTRAL LUBRICATION SYSTEM	Automatic central lubrication for equipment and slewing ring, display of fault and empty message via SENCON

UPPERCARRIAGE

DESIGN	Torsion-resistant box design, precision crafted, steel bushings for boom mounting. Very service-friendly design, engine installed in the longitudinal direction
COOLING SYSTEM	Cooling system with 3 cooling circuits and demand-driven fan control consisting of: coolant cooling and hydraulic oil cooling, hydraulically driven, thermostatically controlled incl. fan reversal; charge air cooling driven directly by engine
OPTIONS	LED lighting package Swing bearing brake via foot pedal Fire extinguisher Low temperature packages Electrical Hydraulic tank preheating 9 kW magnetic generator Additional ballast 1 t to 2 t Comprehensive uppercarriage railings Platform with railing next to cab Warning beacons and alarm horns



Battery disconnect conveniently accessible on operator's seat

TECHNICAL DATA, EQUIPMENT

HYDRAULIC SYSTEM

Load-sensing / LUDV hydraulic system, electro-hydraulic work functions	
OPERATING PRESSURE	up to 350 bar
CONTROL SYSTEM	Proportional, precision electrical control of work movements, 2 electric joysticks for work functions, additional functions via switches and foot pedals
SAFETY	Hydraulic circuits safeguarded with safety valves Pipe-fracture safety valve for stick and compact boom as standard Emergency lowering of the equipment in case of engine standstill
OPTIONS	Bio-oil filling Tool Control for programming pressure/rate of up to 10 tools Load torque warning with capacity display Overload safeguard with shutdown SENNEBOGEN HydroClean micro-filter system (3 µm) with water separator Supplementary hydraulic circuit for shear attachment

SLEWING DRIVE

GEARBOX	Planetary gears with axial piston engine, integrated brake valves
PARKING BRAKE	Spring-loaded, hydraulically ventilated multi-disk safety brake
SLEWING RING	Internal toothing, strong ball bearing slewing ring, sealed
SLEWING SPEED	0-8 rpm
TORQUE	53 kNm



Folding lubrication system for easy maintenance



Particularly gentle movement of the cab thanks to cab elevation G280

TECHNICAL DATA, EQUIPMENT

CAB*

CAB TYPE	Maxcab, 2.8 m elevation
CAB FEATURES	Sliding door incl. sliding window, vibration-damped, tinted safety glass, bullet proof glass on windscreen, safety glass on side windows, skylight, windscreen wiper, roller sunblind on windscreen and skylight, integrated microphone for hands-free system, radio preparation, air-suspended comfort seat, heating/air-conditioning system with fresh air filter and recirculating air filter, joystick steering (mobile version), SENCON

OPTIONS	<ul style="list-style-type: none"> Maxcab Industry, continuous bullet proof glass pane Protective roof guard, FOPS if applicable Protective front guard Active carbon filter for outside air Auxiliary heating system Air-conditioned comfort operator's seat Radio (DAB), with MP3 and Bluetooth® function, hands-free system Cooling box Multifunctional armrests Pressurized cab Steering wheel control 30° tiltable cab External operator panel Sun protection packages
---------	---

UNDERCARRIAGE MOBILE

MP21 mobile undercarriage with integrated 4-point outrigger, steering axle with automated pendulum axle, pendulum axle cylinder with pipe fracture safety valve, all-wheel drive powered by an adjustable hydraulic motor with external, automatically actuated brake valve and 2-stage power shift transmission, planetary axles with integrated steering cylinders, 1-way accelerator pedal, service brake with 2-circuit system, multi-disc brake as parking brake	
TIRE TYPE	8 x 10.00-20
BRAKES	hydraulic
TRAVEL SPEED	0-20 km/h variable
OPTION	<ul style="list-style-type: none"> up to 0.5 m pylon Support plate Stabilizer blade

UNDERCARRIAGE CRAWLER

R25/240 crawler undercarriage in stable, torsionally rigid box construction with hydraulic travel drive, hydraulically ventilated, spring-loaded multi-disc brake as parking brake	
TRAVEL SPEED	0-2.4 km/h
OPTION	<ul style="list-style-type: none"> up to 0.5 m pylon 700 mm triple grouser shoes



TECHNICAL DATA, EQUIPMENT

EQUIPMENT

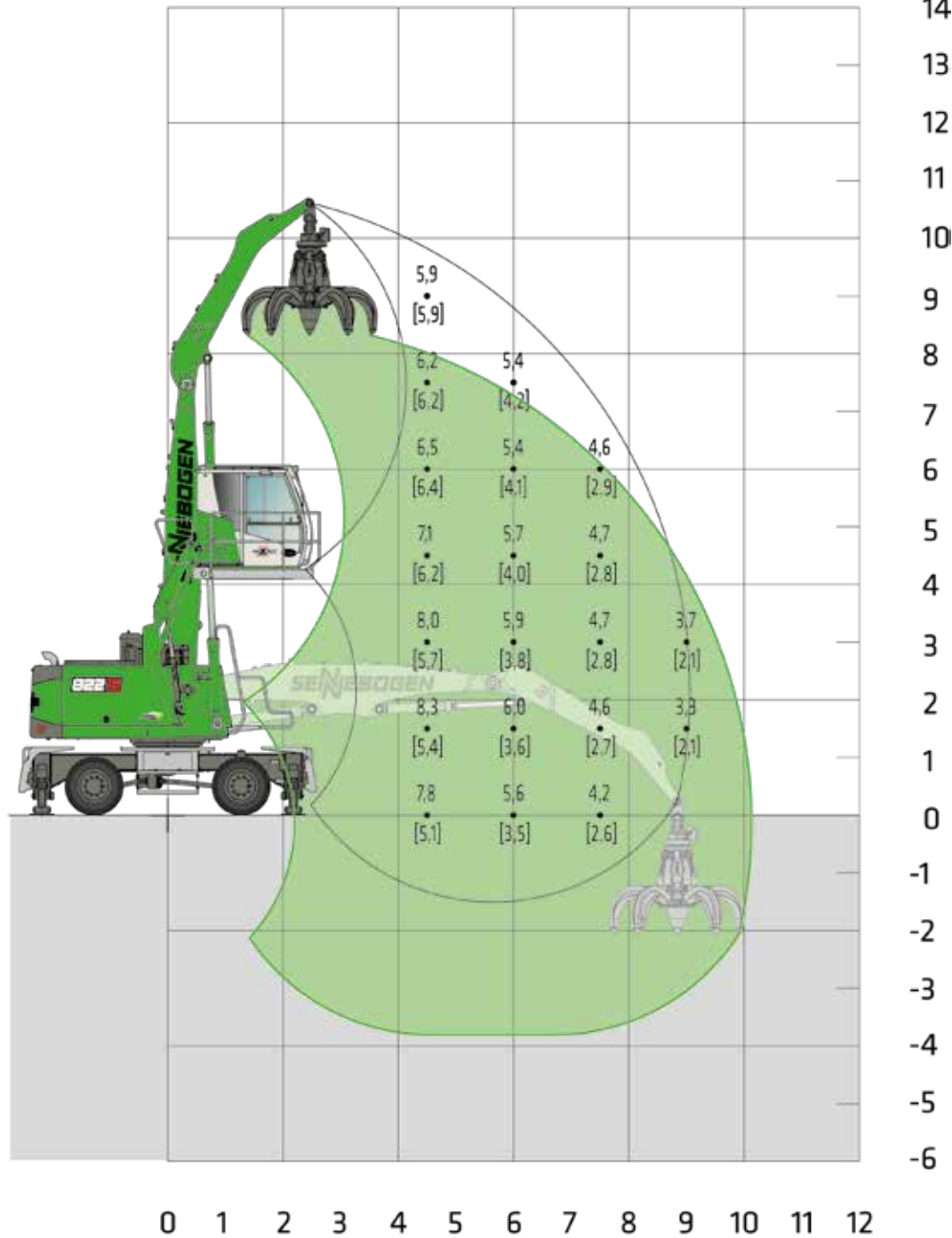
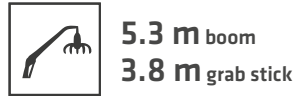
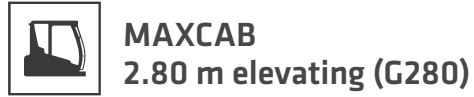
RANGE	up to 10 m
CYLINDERS	Hydraulic cylinders with high-quality sealing and guide elements, end position damping, sealed mounting points
OPTIONS	<ul style="list-style-type: none"> LED lighting Adjustable lift limitation / stick limitation Stick mounted camera Equipment type "ULM" with tipping kinematics Boom damping

OPERATING WEIGHT

MASS	<p>Mobile</p> <p>23.0 t with MP21 and K9 incl. attachment</p> <p>Crawler</p> <p>25.3 t with R25/240 and K9 incl. attachment</p>
NOTE	Operating weight varies by model and equipment.



LOAD RATINGS K9 (MOBILE)

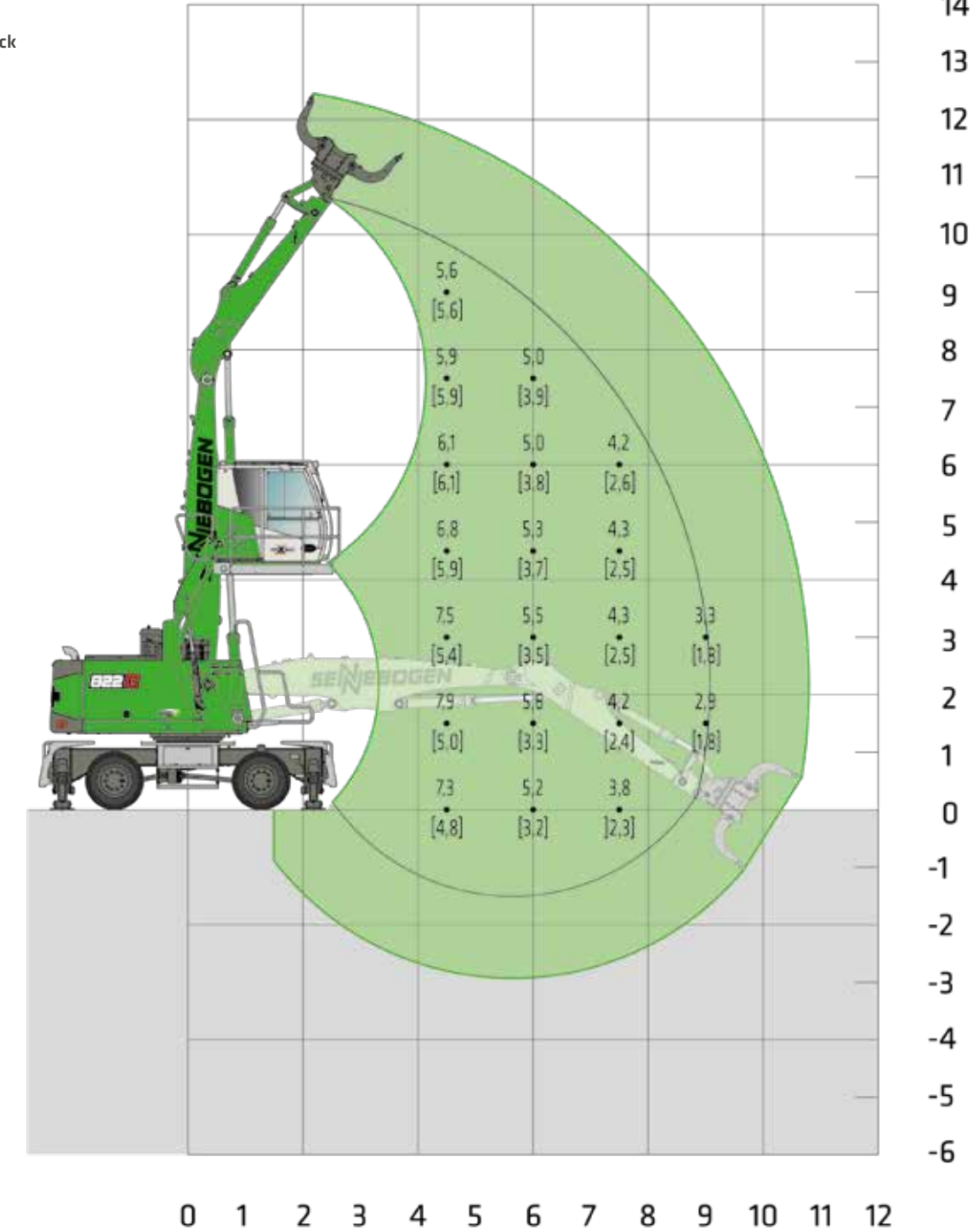
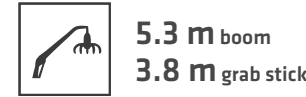


Machine shown in mirror image

20220406110645
[2022040611237]

Notes:
All load ratings are given in tons (t) brought to bear at the end of the stick, without tools on firm level ground. Working tools such as grab, magnet, load hook etc. are included in the specified load ratings. The stated values are 75 % of the static tipping load or 87 % of the hydraulic lifting force according to ISO10567. According to EU standard EN 474/5, hydraulic material handlers used for hoisting must be equipped with a pipe rupture safety device on lifting and stick cylinders and an overload warning device. Load ratings apply to a machine with 4-point outrigger and for 360° slewing. The load ratings in brackets [] apply when the oscillating axle is blocked, unsupported, (free-standing) and for 360° slewing.

LOAD RATINGS K9 ULM (MOBILE)

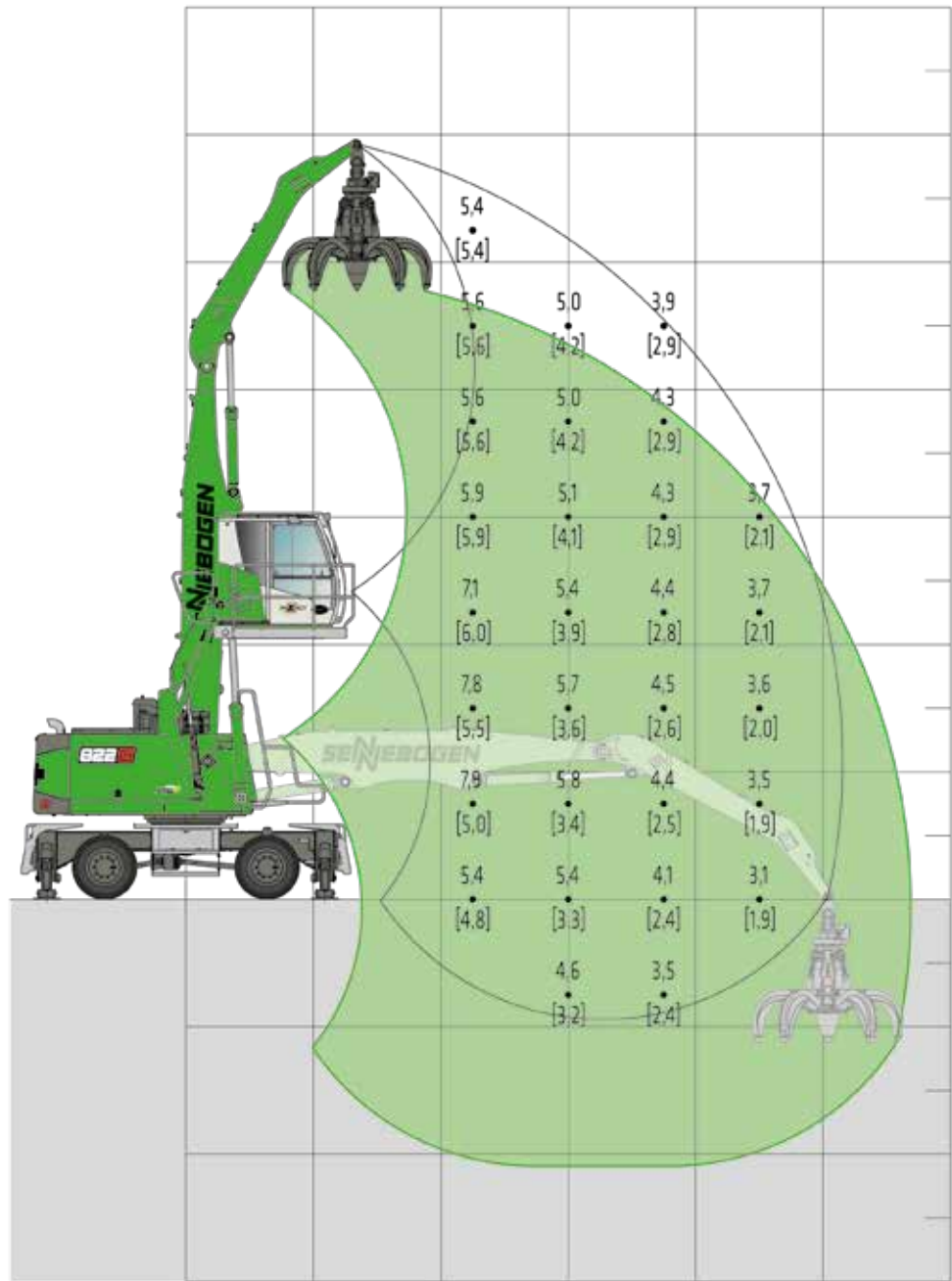
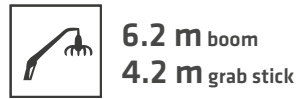
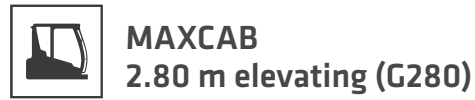


Machine shown in mirror image

20220406112317
[20220406112546]

Notes:
All load ratings are given in tons (t) brought to bear at the end of the stick, without tools on firm level ground. Working tools such as grab, magnet, load hook etc. are included in the specified load ratings. The stated values are 75 % of the static tipping load or 87 % of the hydraulic lifting force according to ISO10567. According to EU standard EN 474/5, hydraulic material handlers used for hoisting must be equipped with a pipe rupture safety device on lifting and stick cylinders and an overload warning device. Load ratings apply to a machine with 4-point outrigger and for 360° slewing. The load ratings in brackets [] apply when the oscillating axle is blocked, unsupported, (free-standing) and for 360° slewing.

LOAD RATINGS K10 (MOBILE)

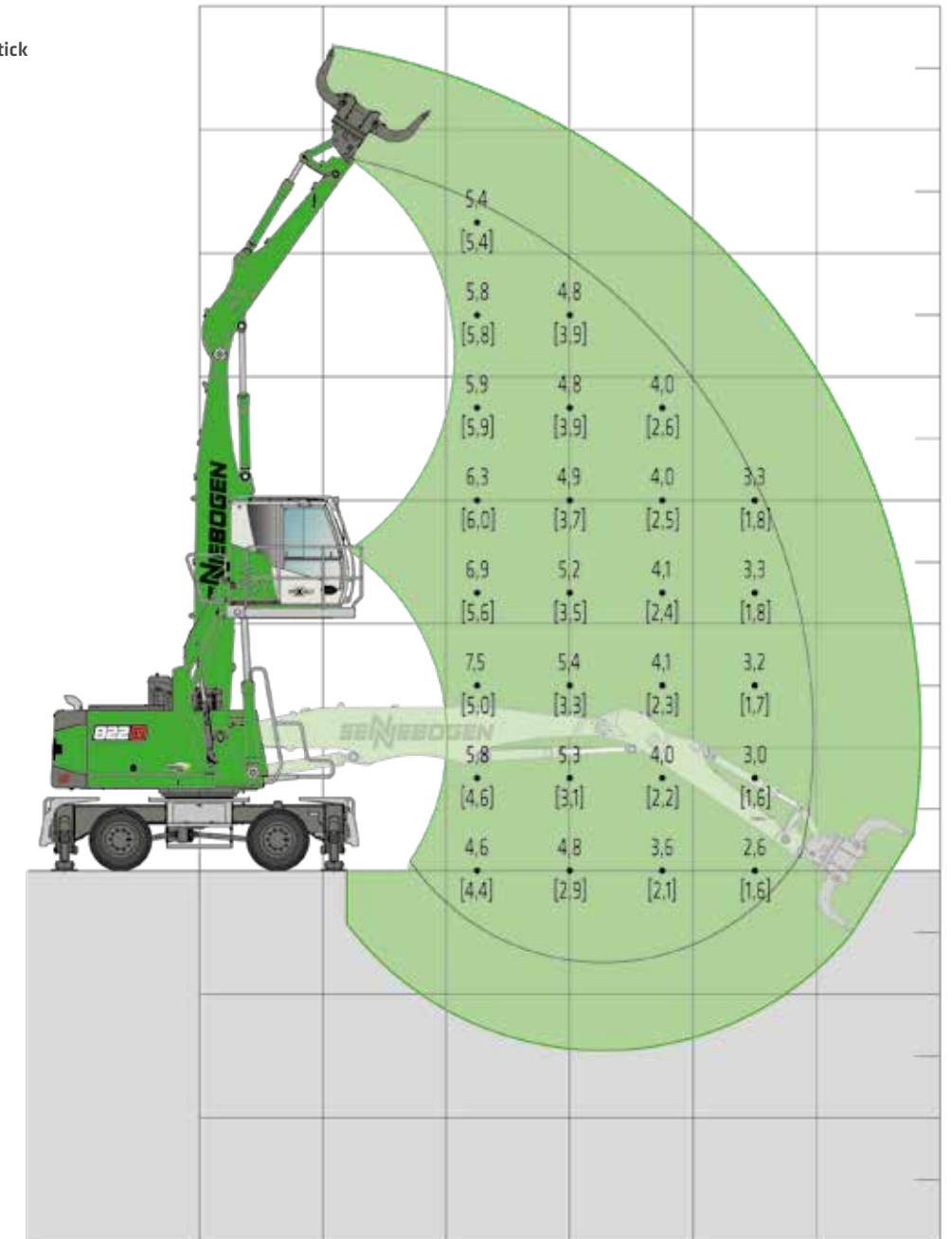
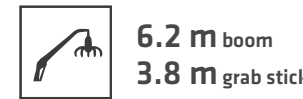


Machine shown in mirror image

20220406105111
[20220406105631]

Notes:
All load ratings are given in tons (t) brought to bear at the end of the stick, without tools on firm level ground. Working tools such as grab, magnet, load hook etc. are included in the specified load ratings. The stated values are 75 % of the static tipping load or 87 % of the hydraulic lifting force according to ISO10567. According to EU standard EN 474/5, hydraulic material handlers used for hoisting must be equipped with a pipe rupture safety device on lifting and stick cylinders and an overload warning device. Load ratings apply to a machine with 4-point outrigger and for 360° slewing. The load ratings in brackets [] apply when the oscillating axle is blocked, unsupported, (free-standing) and for 360° slewing.

LOAD RATINGS K10 ULM (MOBILE)




Machine shown in mirror image

20220406133402
[20220406133610]

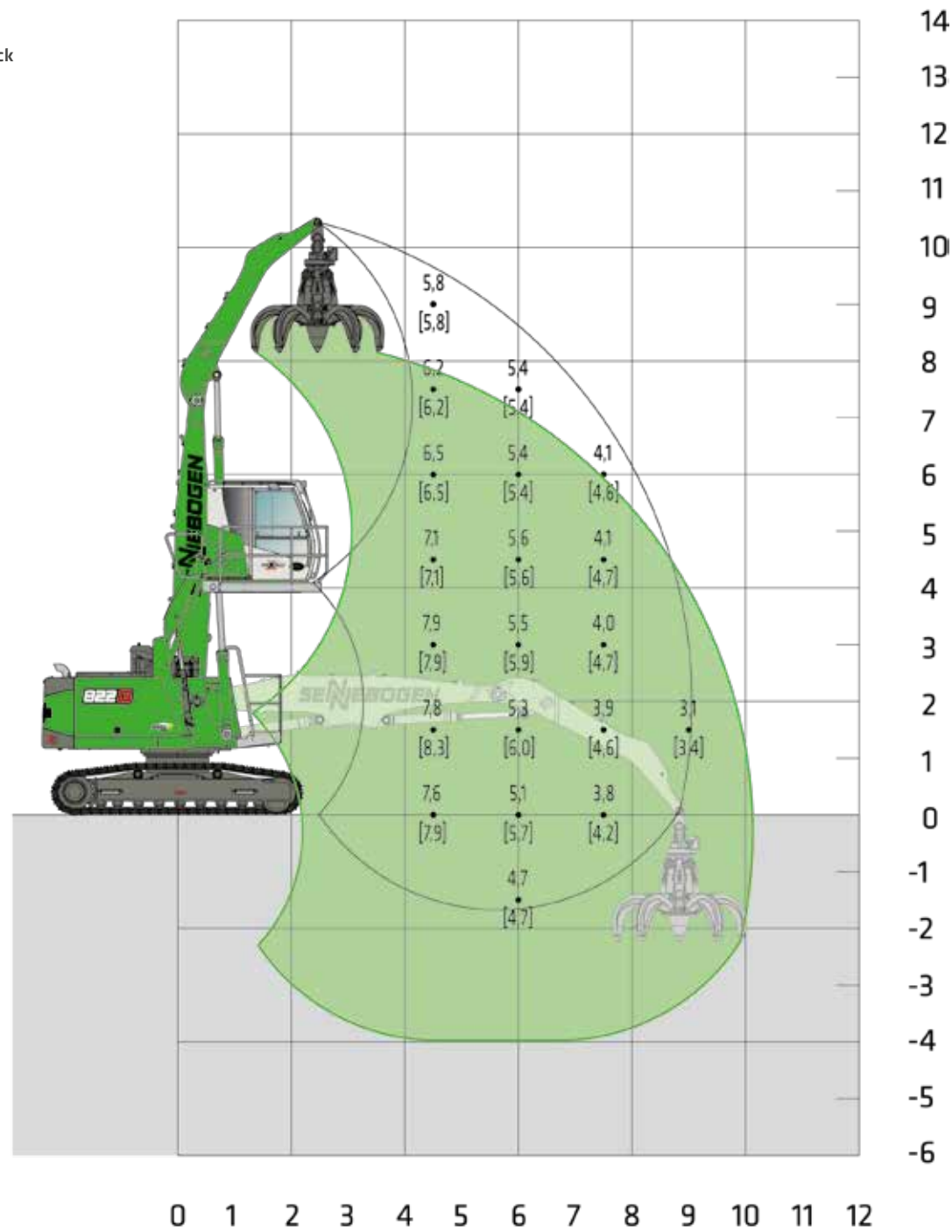
Notes:
All load ratings are given in tons (t) brought to bear at the end of the stick, without tools on firm level ground. Working tools such as grab, magnet, load hook etc. are included in the specified load ratings. The stated values are 75 % of the static tipping load or 87 % of the hydraulic lifting force according to ISO10567. According to EU standard EN 474/5, hydraulic material handlers used for hoisting must be equipped with a pipe rupture safety device on lifting and stick cylinders and an overload warning device. Load ratings apply to a machine with 4-point outrigger and for 360° slewing. The load ratings in brackets [] apply when the oscillating axle is blocked, unsupported, (free-standing) and for 360° slewing.

LOAD RATINGS K9 (CRAWLER)

 R25/240

 MAXCAB
2.80 m elevating (G280)

 5.3 m boom
3.8 m grab stick



Machine shown in mirror image


20220407060225

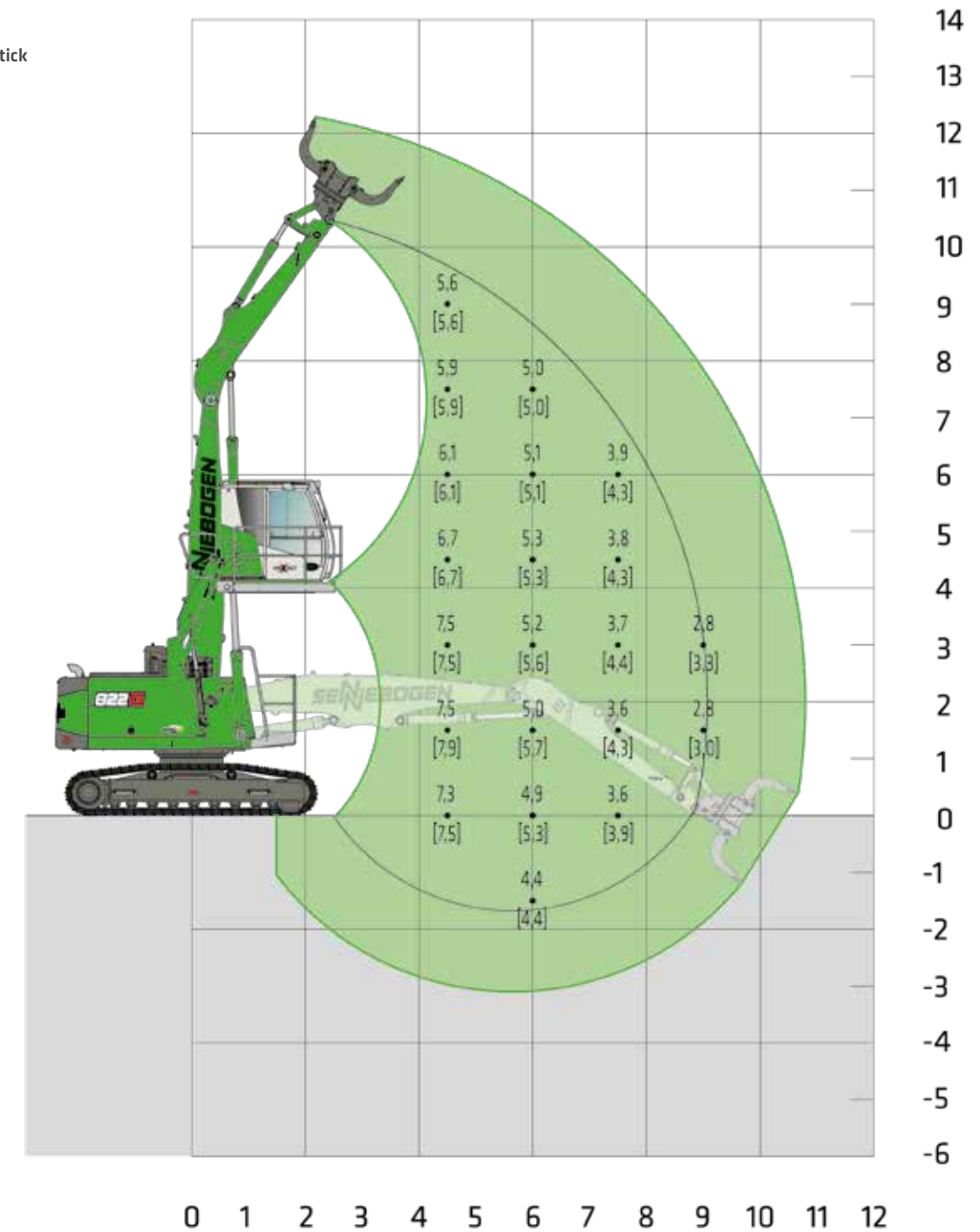
Notes:
All load ratings are given in tons (t) brought to bear at the end of the stick, without tools on firm level ground. Working tools such as grab, magnet, load hook, etc. are included in the specified load ratings. The stated values are 75 % of the static tipping load or 87 % of the hydraulic lifting force according to ISO10567. According to EU standard EN 474/5, hydraulic material handlers used for hoisting must be equipped with a pipe rupture safety device on lifting and stick cylinders and an overload warning device. The specified load ratings apply to maximum track width and 360° slewing. The load ratings in brackets [] apply longitudinally to the undercarriage.

LOAD RATINGS K9 ULM (CRAWLER)

 R25/240

 MAXCAB
2.80 m elevating (G280)

 5.3 m boom
3.8 m grab stick



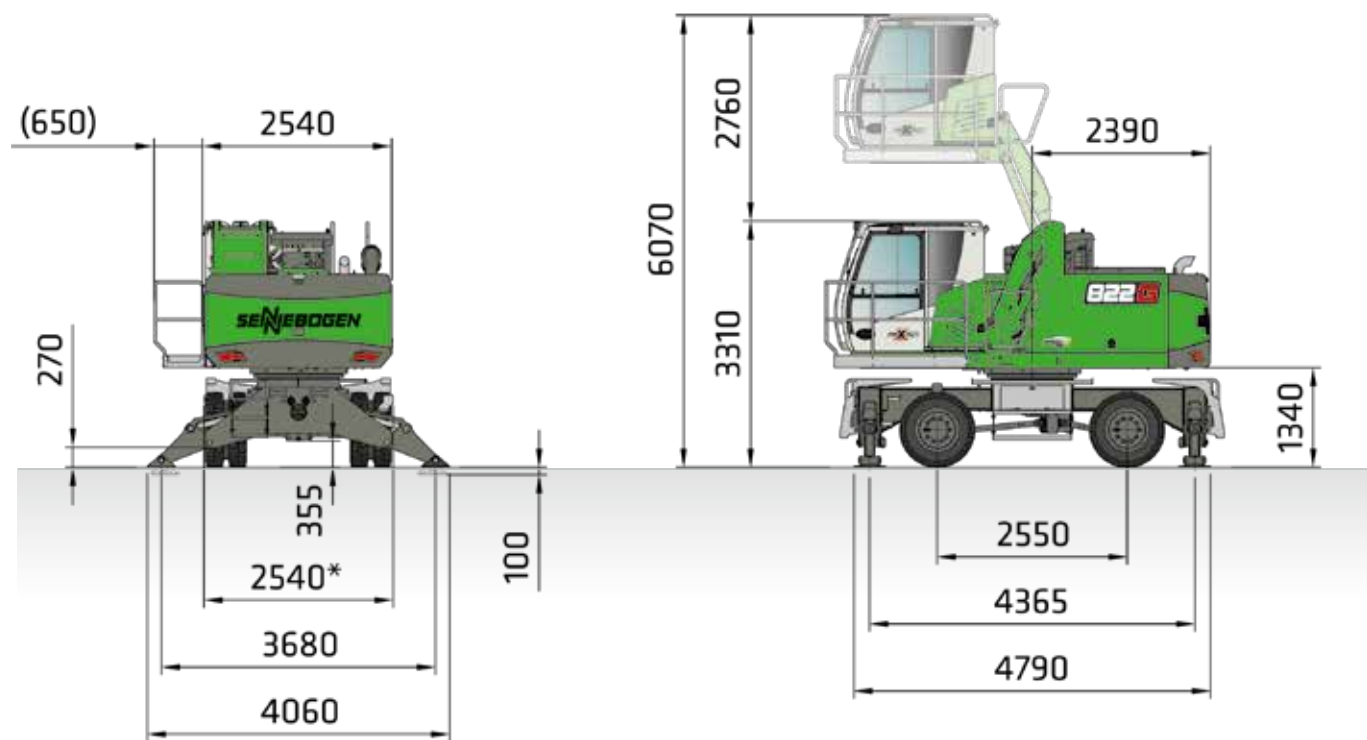
Machine shown in mirror image

20220407055300

Notes:
All load ratings are given in tons (t) brought to bear at the end of the stick, without tools on firm level ground. Working tools such as grab, magnet, load hook, etc. are included in the specified load ratings. The stated values are 75 % of the static tipping load or 87 % of the hydraulic lifting force according to ISO10567. According to EU standard EN 474/5, hydraulic material handlers used for hoisting must be equipped with a pipe rupture safety device on lifting and stick cylinders and an overload warning device. The specified load ratings apply to maximum track width and 360° slewing. The load ratings in brackets [] apply longitudinally to the undercarriage.

DIMENSIONS MOBILE

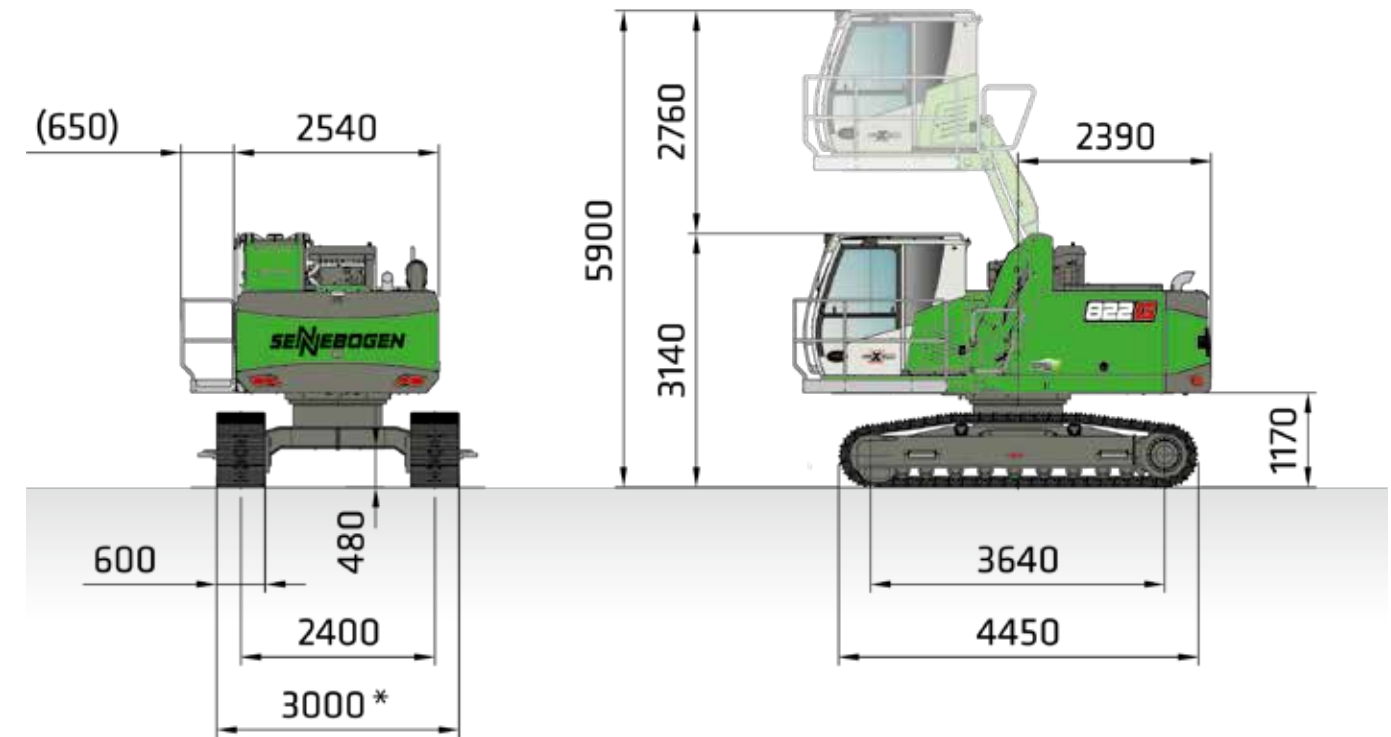
* = Transport width



822 G WITH MP21 MOBILE UNDERCARRIAGE AND G280 HYDRAULICALLY ELEVATING CAB (SERIES), SOLID RUBBER TIRES 10.00-20 (8X)

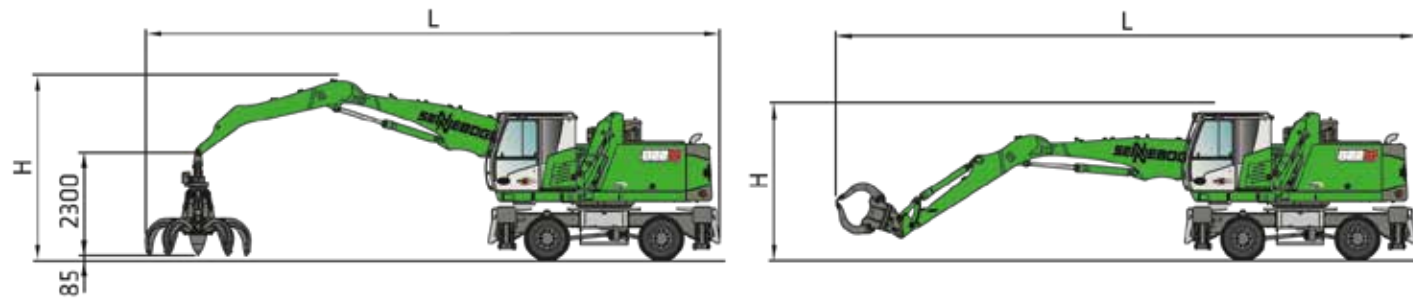
DIMENSIONS CRAWLER

* = Transport width



822 G WITH R25/240 CRAWLER UNDERCARRIAGE AND G280 HYDRAULICALLY ELEVATING CAB (SERIES)

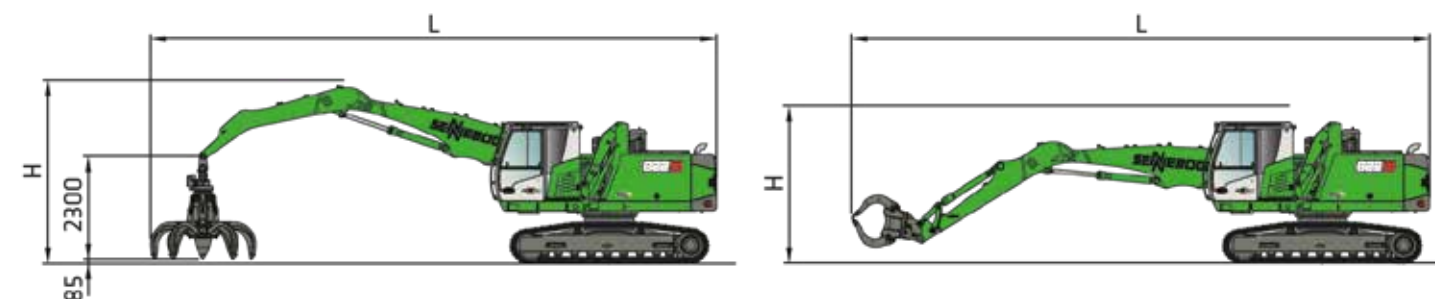
VERTICAL CLEARANCE WITH 600 L ORANGE PEEL GRAB VERTICAL CLEARANCE WITH 450 L SORTING GRAB



	COMPACT BOOM	GRAB STICK	PASSAGE LENGTH (L)	VERTICAL CLEARANCE (H) ORANGE PEEL GRAB	VERTICAL CLEARANCE (H) SORTING GRAB
K9	5.3 m	3.8 m	13.0 m	approx. 4.3 m	
K9 ULM	5.3 m	3.8 m ULM	13.0 m	approx. 4.3 m	approx. 3.5 m
K10	6.2 m	4.2 m	14.0 m	approx. 4.5 m	
K10 ULM	6.2 m	3.8 m ULM	14.0 m	approx. 4.5 m	approx. 3.5 m

Other transport dimensions on request

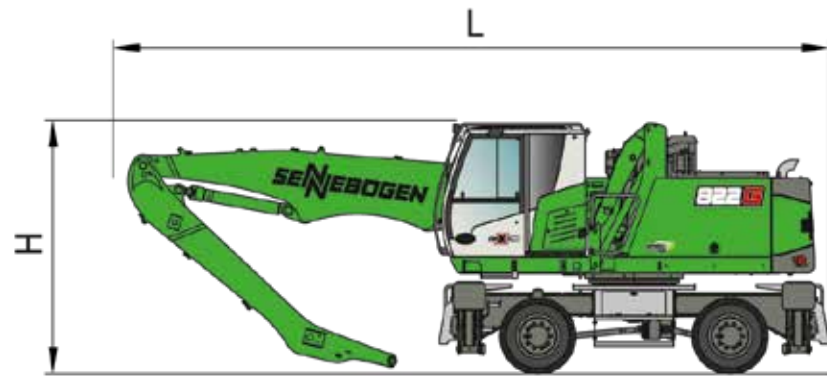
VERTICAL CLEARANCE WITH 600 L ORANGE PEEL GRAB VERTICAL CLEARANCE WITH 450 L SORTING GRAB



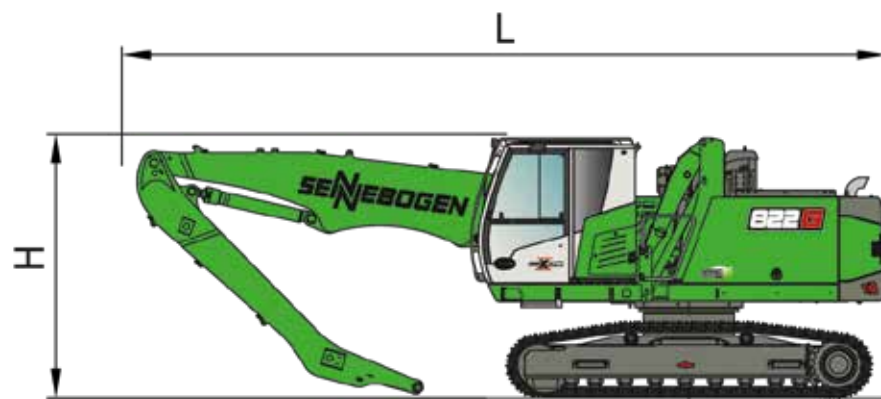
	COMPACT BOOM	GRAB STICK	PASSAGE LENGTH (L)	VERTICAL CLEARANCE (H) ORANGE PEEL GRAB	VERTICAL CLEARANCE (H) SORTING GRAB
K9	5.3 m	3.8 m	13.0 m	approx. 4.3 m	
K9 ULM	5.3 m	3.8 m ULM	13.0 m	approx. 4.3 m	approx. 3.5 m
K10	6.2 m	4.2 m	14.0 m	approx. 4.4 m	
K10 ULM	6.2 m	3.8 m ULM	14.0 m	approx. 4.3 m	approx. 3.5 m

Other transport dimensions on request

TRANSPORT DIMENSIONS MOBILE/CRAWLER



822G TRANSPORT DIMENSIONS MP21				
	COMPACT BOOM	GRAB STICK	TRANSPORT LENGTH (L)	TRANSPORT HEIGHT (H)
K9	5.3 m	3.8 m	8.6 m	3.35 m
K9 ULM	5.3 m	3.8 m ULM	8.6 m	3.35 m
K10	6.2 m	4.2 m	9.6 m	3.35 m
K10 ULM	6.2 m	3.8 m ULM	9.6 m	3.35 m



822G TRANSPORT DIMENSIONS R25/240				
	COMPACT BOOM	GRAB STICK	TRANSPORT LENGTH (L)	TRANSPORT HEIGHT (H)
K9	5.3 m	3.8 m	8.5 m	3.25 m
K9 ULM	5.3 m	3.8 m ULM	8.5 m	3.25 m
K10	6.2 m	4.2 m	9.5 m	3.25 m
K10 ULM	6.2 m	3.8 m ULM	9.5 m	3.25 m

RECOMMENDED GRABS

SGM ORANGE PEEL GRAB (4 SHELLS)



TYPE / SIZE	GRAB CAPACITY	WEIGHT ¹		MAX. BULK DENSITY
		SHELL PROFILE		
		HO	G	
SGM	l	kg	kg	t/m ³
500.20-4	500	835	975	2.0
400.30-4	400	1290	1390	
600.30-4	600	1315	1445	
800.30-4	800	1350	1515	

SGM ORANGE PEEL GRAB (5 SHELLS)



TYPE / SIZE	GRAB CAPACITY	WEIGHT ¹		MAX. BULK DENSITY
		SHELL PROFILE ²		
		HO	G	
SGM	l	kg	kg	t/m ³
500,20	500	970	1060	2.0
400,30	400	1480	1530	
600,30	600	1510	1590	
800,30	800	1550	1660	

SGZ CLAMSHELL GRAB



TYPE / SIZE	GRAB CAPACITY	WEIGHT ¹	MAX. BULK DENSITY
		kg	
		t/m ³	
1000.40	1000	1440	2.0
1200.40	1200	1575	

SGR SORTING GRAB



TYPE SERIES / MODEL	GRAB CAPACITY	WEIGHT ¹
SGR	l	kg
800.30 L	380	1000
1000.30 L	450	1050
1200.30 L	520	1060

MAGNET PLATES



TYPE SERIES / MODEL	POWER	DEAD WEIGHT	BREAKAWAY FORCE	LOAD CAPACITY IN KG
WOKO	kW	kg	kN	Slab (safety factor 2)
S-RLB 10	4.8	730	190	9500
S-RLB 11.5	5.5	1060	240	12000
S-RLB 12.5	8.8	1310	280	14000

Recommended magnetic generator: 9 kW / 15 kW

Detailed information on grabs, as well as timber grabs, quick-release systems, and other attachments can be found in the SENNEBOGEN grab brochure

www.sennebogen.com/grabs

¹ Weight information without grab suspension, stick bolts, hose system

² Half-open shells: Shell sheet steel width 400 mm, 500 mm for 1,250 l capacity and higher
Subject to technical changes.



SENNEBOGEN ACADEMY

Increase your knowledge because success is based on knowledge. In the SENNEBOGEN ACADEMY we place great importance on ensuring it flows powerfully.

➔ www.sennebogen-academy.com



SERVICE UND WARTUNG

Comprehensive customer service. And supply of spare parts. Service is a TOP priority for us.

➔ www.sennebogen.com/customer-service



SENtrack

Efficient fleet management with SENtrack: use information that would otherwise stay hidden and increase your efficiency.

➔ www.sennebogen.com/sentrack



RENTAL & USED

Discover the unique range of rental machines available from SENNEBOGEN Rental & Used. Find your rental machine here:

➔ www.sennebogen-rental-used.com

SERVICE-PLUS BROCHURE



Discover more about the Service-Benefits around your machine

JOIN OUR OPERATORS' CLUB

The spotlight is on you and your machine! We focus on exclusive information, sharing experiences with other SENNEBOGEN operators as well as fun and enthusiasm.

All the benefits here ➔ www.sennebogen.com/operators-club



MOVE BIG THINGS WITH US



over **72**
years of
experience

100%
family company

over **2200**
experienced
specialists worldwide

5
production plants
in Germany

over **180**
sales and service partners
worldwide

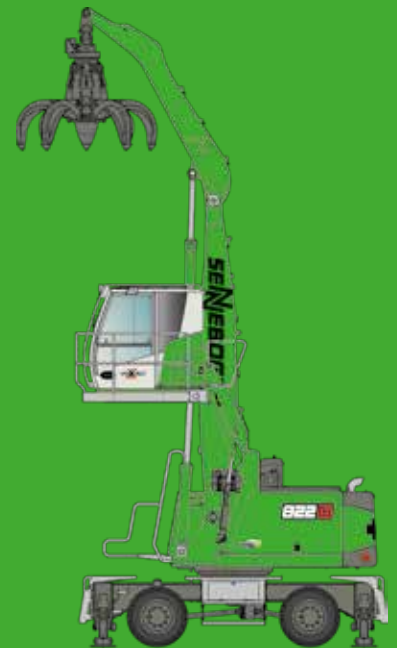
27
different material
handlers



Telehandler 4-5.5 t	Balancer 130-300 t	Material handler 17-420 t	Duty cycle crane 13.5-300 t	Crawler crane 50-300 t	Telescopic crane 16-130 t	Port crane 300 t
------------------------	-----------------------	------------------------------	--------------------------------	---------------------------	------------------------------	---------------------

This catalog describes machine models, the scope of equipment of individual models, and configuration options (standard equipment and optional equipment) of the machines delivered by SENNEBOGEN Maschinenfabrik GmbH. Machine illustrations may contain optional and supplementary equipment. Actual equipment may vary depending on the country to which the machines are delivered, especially in regard to standard and optional equipment. All product designations used may be trademarks of SENNEBOGEN Maschinenfabrik GmbH or other supplying companies, and any use by third parties for their own purposes may violate the rights of the owners.

Please contact your local SENNEBOGEN sales partner for information concerning the equipment variants offered. Requested performance characteristics are only binding if they are expressly stipulated upon conclusion of the contract. Delivery options and technical features are subject to change. All information is supplied without liability. Equipment is subject to change, and rights of advancement are reserved. © SENNEBOGEN Maschinenfabrik GmbH, Straubing, Germany. Reproduction in whole or in part only with written consent of SENNEBOGEN Maschinenfabrik GmbH, Straubing, Germany.



SENNEBOGEN
Maschinenfabrik GmbH
Hebbelstrasse 30
94315 Straubing, Germany

 www.sennebogen.com

MOVE BIG THINGS

SALES SENNEBOGEN

Green Line Sales

 +49 (0) 9421 / 540 - 146

 materialhandling@sennebogen.de

SPARE PARTS CENTER

Spare parts orders

 spareparts@sennebogen.de

AFTER SALES

Technical support

 service@sennebogen.de