

**SENEBOGEN**

**895E**  
Hybrid



# PORT MATERIAL HANDLER

WITH A REACH  
OF UP TO 40 m



**PORTCAB**



approx. 420 t



40 m



585 kW



500 kW

Stage V

**895E**  
Hybrid

# The port giant

Groundbreaking dimensions for the port – the world's largest material handler impresses with its enormous reach of up to 40 m, has a proud operating weight of around 420 t and is also extremely economical to operate thanks to proven, large-scale recuperation technology. All of this makes the green material handling giant ideally qualified for heavy-duty operations in steelworks and ports.





## A long-term investment

The E-series is characterised by robust components, and an intelligent and resource-efficient machine design – the machine retains its value over the long-term, even with demanding continuous use.

---

## Modular variety

Unique machine variety – we build the perfect machine to meet the needs of your port.

---

## Maximum comfort

The spacious Portcab is designed with the needs of the operator in mind – comfortable and spacious with sophisticated features.

---

## Maintenance & service

Intelligent fleet management and machine status monitoring via the SENtrack portal as well as unique accessibility of machine components.

---

## Occupational safety

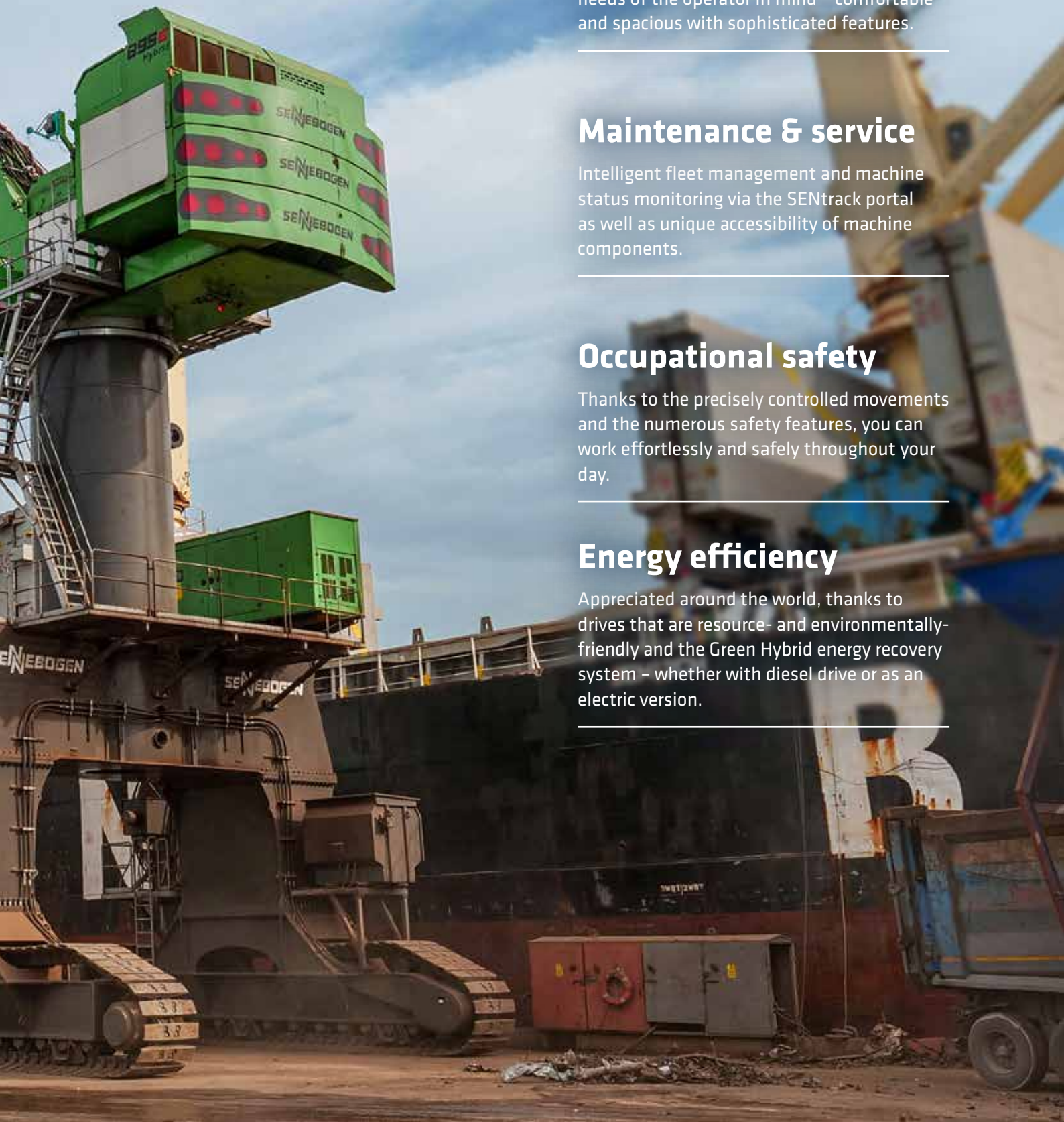
Thanks to the precisely controlled movements and the numerous safety features, you can work effortlessly and safely throughout your day.

---

## Energy efficiency

Appreciated around the world, thanks to drives that are resource- and environmentally-friendly and the Green Hybrid energy recovery system – whether with diesel drive or as an electric version.

---



# AN INVESTMENT THAT PAYS OFF.

The durability and reliability of the SENNEBOGEN Green Line is based on decades of experience in the design of high-quality crane and material handling technology. We can find the perfect solution for every port application, ensuring you can handle general cargo and bulk materials in an efficient and resource-saving way.



Low operating costs thanks to energy-efficient electric drives and energy recovery through the Green Hybrid system



Manageable and service-friendly technology for maximum machine availability



Consistent performance thanks to robust steel construction, and high-quality drive and control components from renowned manufacturers



High handling capacity of up to 1,800 t per hour\* reduces the berthing time of ships



Sophisticated technology thanks to the consistent further development up to the 5th generation of the E-Series – for demanding material handling



Durable and robust in extreme weather and harsh operating conditions, works equally well in the cold of the Arctic Circle or the heat of Dubai





This 895 E only requires  
**3 cycles**  
to fully load trucks



# Advanced. The E series.



## LONG SERVICE LIFE, HIGH VALUE RETENTION

- Reliable and powerful thanks to its robust construction and high-quality components
- Temperature-controlled cooling system, designed and tested for heavy-duty applications and high ambient temperature

## SOPHISTICATED, STATE-OF-THE-ART TECHNOLOGY

- In the 5th generation – decades of experience in designing and constructing material handlers



## **SIMPLE TO MAINTAIN AND SERVICE**

- /// Manageable technology and no over-engineering
- /// Ideal accessibility to all components for easy maintenance

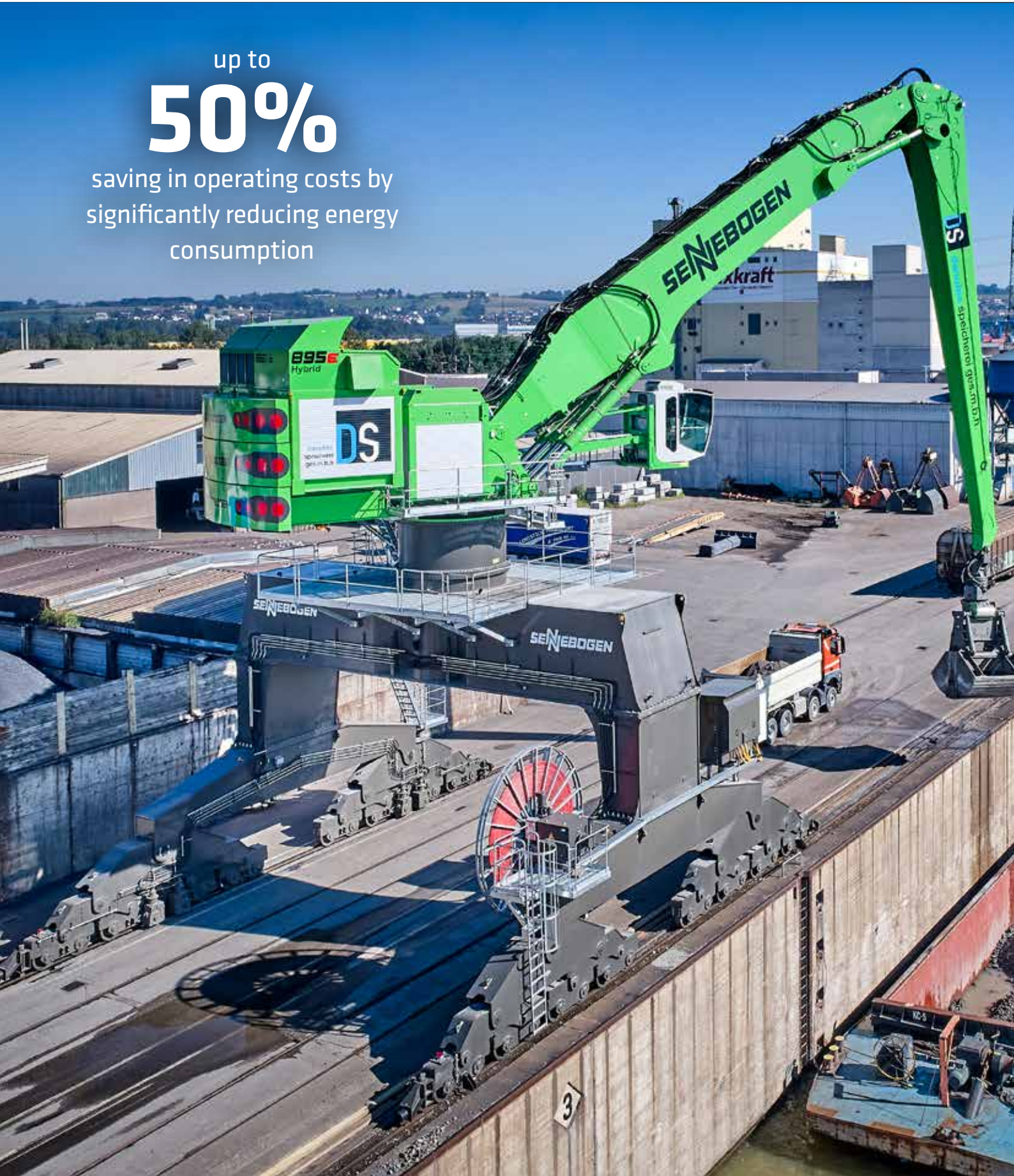
## **ENVIRONMENTALLY-FRIENDLY DRIVE TECHNOLOGY**

- /// State-of-the-art engine, drive and emission systems in line with the latest technology standards (stage V)
- /// Large-scale pipes and valves for maximum efficiency



up to  
**50%**

saving in operating costs by  
significantly reducing energy  
consumption







# SENNEBOGEN – WORLD LEADER IN ELECTRIC MATERIAL HANDLERS.

Over the last **35 years**, we have implemented by far the most electrical applications

- /// A complete solution direct from the manufacturer – detailed route analyses and individual power supply project planning, tailored specifically to your application
- /// A variety of solutions for power supplies, voltage types and emergency operating units ex works
- /// No fueling stops or need to store fuel - always ready for use
- /// Service intervals twice as long and lower service costs: No need for fuel/oil filter and oil changes compared to a diesel engine
- /// High value retention and significantly longer service life
- /// No exhaust gases – good for the environment, good for people
- /// Low-noise and vibration-free operation for greater working comfort
- /// Cleaner engine compartment even after long operating period

# THE SENNEBOGEN POWERPACK

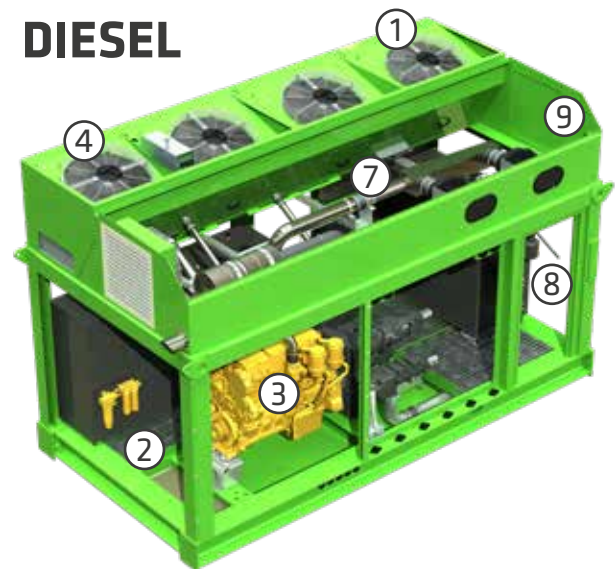




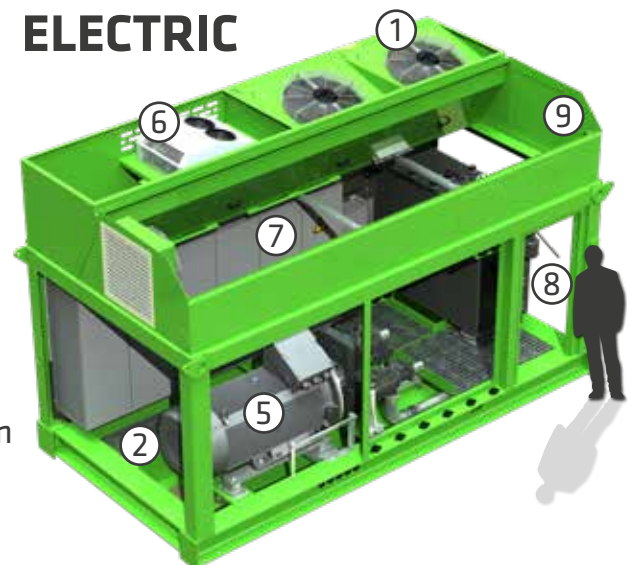
# DIESEL OR ELECTRIC DRIVE THE DECISION IS YOURS!

Efficient diesel technology or economical electric engine – the choice is yours. With its folding roof, the almost identical, spacious Powerpack offers sufficient space for maintenance work - easily and safely accessible. The ventilation system (forced ventilation) also ensures a dust-free engine housing through overpressure filtering of the outside air.

## DIESEL



## ELECTRIC



- ① Oil cooler
- ② Fresh air intake
- ③ Diesel engine
- ④ Diesel engine cooler
- ⑤ Electric drive
- ⑥ Air conditioner
- ⑦ Control cabinet
- ⑧ Central lubrication system
- ⑨ Hydraulically controlled Powerpack roof

# GREEN HYBRID – THE MOST ADVANCED ENERGY RECOVERY TECHNOLOGY ON THE MARKET





## GREEN HYBRID ENERGY RECOVERY TECHNOLOGY



Energy recuperation through safe & smart design: watch the video to find out how the SENNEBOGEN Green Hybrid system makes port handling even more efficient.

[www.sennebogen.com/895-green-hybrid](http://www.sennebogen.com/895-green-hybrid)

Save up to  
**55%**  
energy with two hybrid  
hydraulic cylinders



1 Boom lowers, gas compresses



2 Energy storage module consisting of hydraulic cylinder and nitrogen accumulator



3 The nearly constant force transmission throughout the cylinder cycle supports the next boom lift

## SENNEBOGEN GreenHybrid

Protects the environment, saves energy, reduces your costs.

- System advantages: large system volume and constant force transmission over the entire cylinder cycle
- System stability through constant pressure and temperature control
- Functional safety through the use of standard hydraulic components
- System is optimally adjusted to the individual machine configuration

# ONE MACHINE THREE MODES OF USE

## OPTIMIZED FOR SPEED

**The 895 E-Series combines speed and efficiency**

Especially when handling bulk materials, fast loading or unloading times are required to save money. As standard, the port giant therefore operates in a speed-optimized handling mode for fast work cycles.



## OPTIMIZED FOR PRECISION

**General cargo handling is all about accuracy**

The 895 E-Series moves pulp packages, Big Bags or other loose-loaded goods carefully and precisely – simply at the push of a button on the joystick and without interrupting work.





## OPTIMIZED FOR LOAD CAPACITY AND PRECISION

**“Heavy Lift” means getting the most out of the 895 E-series**

This function supports you in particular when handling heavy general cargo such as containers or coils. Working in heavy lift mode significantly increases the load capacity of the machine and at the same time the machine controls its target even more sensitively.



# SAFETY FIRST.

Enjoy a safe work environment thanks to numerous safety features developed especially for port use. Protecting people, port and machine.

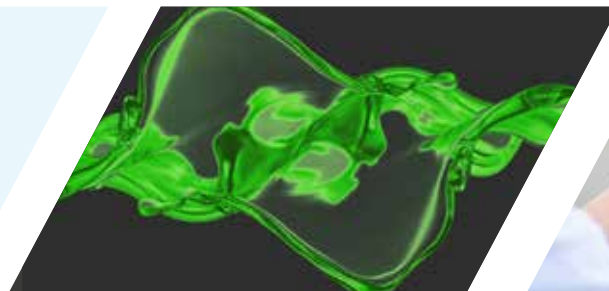
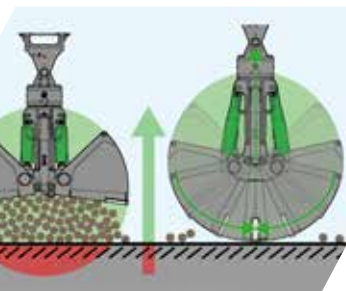


## HOW TO OPERATE THE SAFETY BOOM LIFT



This video will show you how the SENNEBOGEN Safety Boom Lift works.

[www.sennebogen.com/safety-boom-lift](http://www.sennebogen.com/safety-boom-lift)



## Safety Boom Lift

Grab automatically lifts as it closes, protecting ship hulls, port surfaces, equipment and the grab itself

## Bio oil

For extended oil change intervals, with safe environmental compatibility

## SENtrack

Maintain fleet management safety by monitoring the condition of your machines



## Safe & ergonomic

optimum cab and machine component accessibility via stairs and ascents

## Component safety

maximum service life thanks to the robust steel construction - produced in our very own subsidiary



## Powerful LED spotlights

for optimal illumination of the work area

## Load moment limitation

protection of equipment by switching off in the event of an impermissible load

## Optimal camera monitoring

of all safety-relevant areas\*

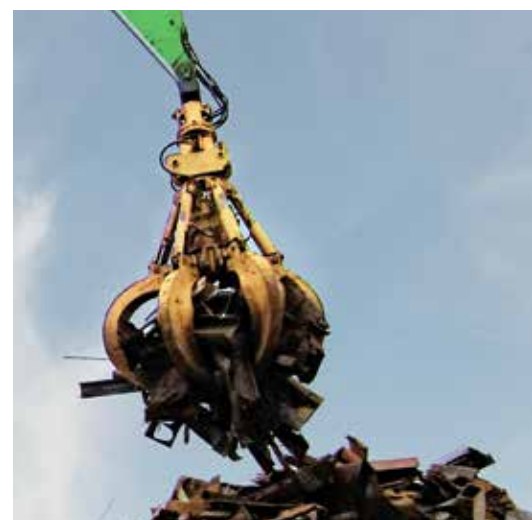
\* Cameras are installed as standard on the right-hand side and to monitor the rear area. Additional cameras, e.g. on the stick, are available on request.

# EXPERIENCE VARIETY FOR EVERY TYPE OF MATERIAL

Today general cargo, tomorrow bulk cargo – working in the port means staying flexible from day to day. The entire range of handling technology can be flexibly operated using the quick change system on the stick and the SENNEBOGEN port machines' powerful hydraulics.



Bulk material (feed, coal, etc.)



Scrap handling



Timber grab





Big Bag loading



Steel coils



Timber spreader/wooden pallet loading



Container handling



Vacuum lifter



Pulp spreader

## QUICK AND EASY GRAB CHANGE



Watch the video to see how quick and easy it is to change the grab with the quick change system on the stick!

[www.sennebogen.com/quick-coupler](http://www.sennebogen.com/quick-coupler)

# A MODULAR DESIGN. NUMEROUS APPLICATIONS.

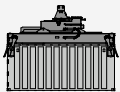
## EQUIPMENT



Orange peel grab



Clamshell grab



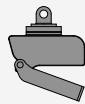
Spreader



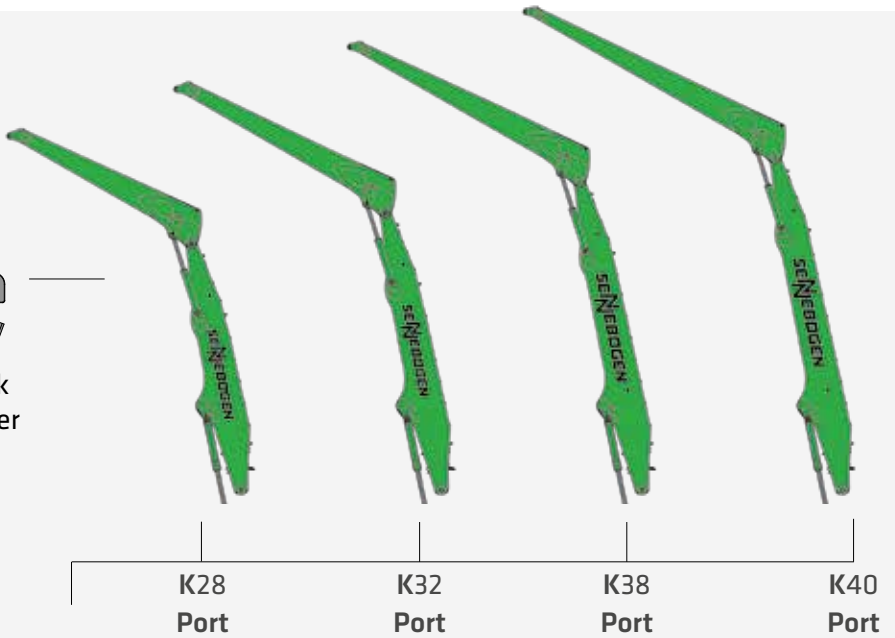
Loading hook



Coil hook



Quick coupler



K = Compact boom

Port equipment for longer reach and/or more load capacity

## CAB



PORTCAB

Portcab

## CAB ELEVATION



Skylift 1100



Diesel-hydraulic drive



Electro-hydraulic drive



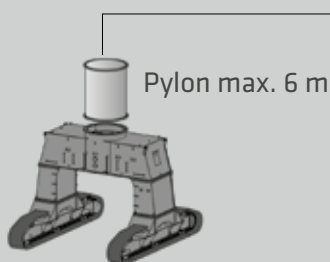
Motorized cable reel



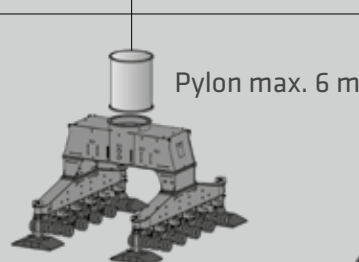
Transformer

## UPPERCARRIAGE

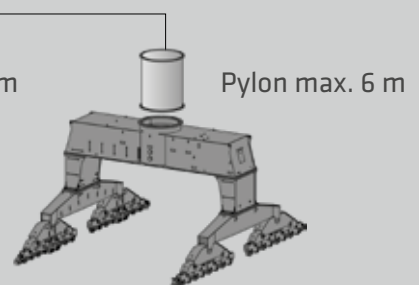
### UNDER-CARRIAGE



Crawler gantry PR400/840



Mobile gantry PM400/840



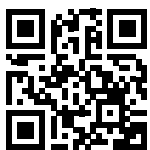
Rail gantry\*





## WHAT DOES YOUR MACHINE LOOK LIKE?

Configure your individual machine from our modular system. The great variety of solutions that we can implement in this way is unique anywhere in the world.



### CUSTOM CONFIGURATION

More than 16,000 unique material handling solutions can be delivered through SENNEBOGEN's modular machine design - watch the video now!

→ [www.sennebogen.com/versatility](http://www.sennebogen.com/versatility)

# MAXIMUM MOBILITY AND DRIVE RANGE

Mobile gantry,  
diesel drive



Clean diesel technology or highly efficient electromobility – with the help of the modular machine concept, you can choose the right solution for your application

- /// Cable-supplied power for linear routes on the quay
- /// Rail concepts adapted to existing tracks
- /// Auxiliary engines for bridging short distances to the nearest power source
- /// Impressive agility with mobile gantry undercarriage thanks to all-wheel steering and crab steering



Crawler gantry,  
electric driveRail gantry,  
electric drive

## DISCOVER MOBILITY

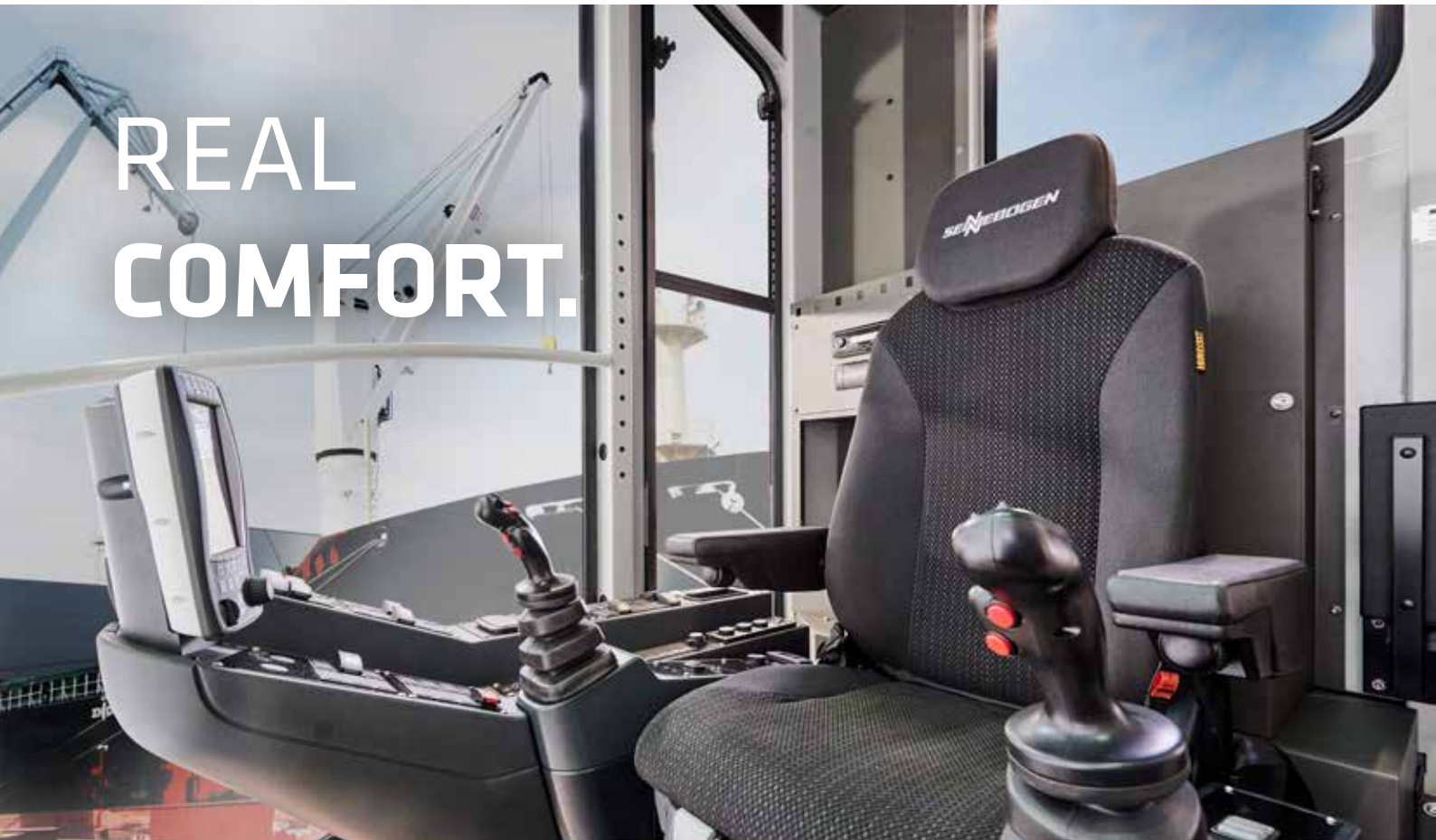


Crawler, mobile or rail gantry: thanks to the different undercarriage designs, you remain flexible in the port – whether with diesel drive through optional additional tanks in the portal supports or sophisticated power supplies on the quay.

The undercarriage's track gages and clear portal height can be optimized to suit your needs at any time thanks to a variable clearance profile. You can also raise the uppercarriage with pylon by up to 6 m for additional visibility inside the ship!

➔ [www.sennebogen.com/895-mobility](http://www.sennebogen.com/895-mobility)

# REAL COMFORT.



## Everything in view

The spacious cab with panoramic view gives you a practical overview of your work area. The window in the floor makes it possible to carry out precise loading operations even in close proximity. The safety cameras provide support and allow you to monitor the critical areas conveniently via the monitoring system in the cab.

## Easy control

The intelligent SENCON control system gives you quick and easy feedback on the machine's condition. Thanks to the intuitive user interface, it has never been easier to monitor energy consumption and utilization, control the desired working modes and contribute towards reducing operating costs.

## For your health

Operators spend many hours in their working position. The back-friendly comfort seat, adjustable armrests, joysticks that sit comfortably in the hand, and the optimally arranged controls make daily work as easy as possible.

## Pleasant indoor climate

Whether in warmer areas or in ports with sub-zero temperatures, you can enter a work space with a comfortable temperature every day and concentrate on the essentials of work thanks to heating and air conditioning.

**“We welcome regular feedback from operators to ensure the work space is configured perfectly.”**

ROBERT AUMÜLLER,  
Head of the Port Business Unit





## THE BEST WORKPLACE IN THE PORT



Come with us and experience the unique overview that the Portcab has to offer in the video!

➔ [www.sennebogen.com/895-portcab](http://www.sennebogen.com/895-portcab)

**PORTCAB**

# CAB HIGHLIGHTS



The large capacity cab for the best all-round view of the port

**IN SERIES**



ENTRANCE	Easy access through wide cab door
OPERATOR'S SEAT	Air-suspended, with lumbar support, headrest and numerous settings for optimal ergonomics, heated
ARM RESTS AND FOOT SUPPORTS	Easy to adjust to suit each user
WINDSHIELD	Generous windshield, tinted double glazing for safety windows
FLOOR WINDOW	Large floor window made of safety glass for the best view into the hull
WIPERS	Parallelogram windshield wipers for harsh weather conditions
	Wipers for skylight
AIR CONDITIONER	Heating/air conditioning system with fresh air and recirculating air filter
LARGE 10.2" MONITOR	Camera-supported monitoring of the danger zone (rear, right)
FOLDAWAY SEAT	Additional trainer's seat with seat belt
RADIO PREPARATION	✓
SENCOR CONTROL AND DIAGNOSTIC SYSTEM	✓

**OPTIONS**

AIR-CONDITIONED SEAT	✓
RADIO	✓
COOLING BOX FOR FOOD AND DRINKS	✓
LOUD SPEAKER SYSTEM	✓
SUN PROTECTION PACKAGE	✓



# ALWAYS THE RIGHT VIEWING ANGLE

The name 'Skylift' can be taken literally! Depending on the version and undercarriage being used, the flexible cab adjustment allows you to look into a ship's hull from up to 22 meters. Thanks to a sophisticated system of steps, ascents and railings, access to the cab and maintenance points on the uppercarriage is safe and comfortable.



# EFFECTIVE FLEET MANAGEMENT

## 1. Reduce service costs

The dashboard is used to monitor the machine and its main operating parameters (temperatures, consumption). If key figures deviate significantly from the target value, the user is informed immediately.

## 2. Reduce consumption

You will receive daily updated insights into your fleet processes: Easily identify and optimize times when machines are idle or change set parameters when machines are underloaded to reduce consumption.

## 3. Improve productivity

With just a few clicks, you can identify and optimize machine capacity, analyse routes if required and thus make your port processes more profitable.

## 4. Safeguard your investment

Practical alarm messages inform you about critical machine conditions. In the event of irregular movements, the machine can also easily be deactivated remotely.

**“What if you could receive real-time data from all your machines with just one click and so increase your productivity? SENNEBOGEN’s SENtrack telematic system makes this possible.”**





# MAINTENANCE AND SERVICE.

KEEP IT SIMPLE. WITH MANAGEABLE TECHNOLOGY.



Reliable and practical technology makes life easier. Where electronics add no value, we rely on hydraulics and electrical systems.



We make you happy, not reliant. With cost-effective components and fewer process steps, you can take care of the machine on your own.



The most important components, such as the accumulator module or the electrical distributor, are all easily accessible from a central point for straightforward checking and troubleshooting.



The SENCON control system supports you with diagnostics and makes troubleshooting easier. So your machine is back in action more quickly.



All maintenance and service points are clearly arranged and easily accessible. The clear labeling of components makes finding your way around easy.

# TECHNICAL DATA, EQUIPMENT

## MACHINE TYPE

MODEL (TYPE) 895 Hybrid

## DIESEL ENGINE

TYPE	<b>Stage V:</b> CAT C18 EM0217 <sup>1</sup> Rated power: 597 kW / 1800 rpm Operating point standard: 585 kW / 1600 rpm Operating point ECO: 562 kW / 1500 rpm  <b>Stage II:</b> On request  Both: automatic idle/stop
COOLING	Water-cooled incl. fuel pre-filter
DISPLACEMENT	18.1 l
NUMBER OF CYLINDERS	6
BATTERIES	2 x 210 Ah battery disconnect switch
ELECTRICAL SYSTEM	24 V
OPTIONS	Engine block heater Electric fuel pump

## TANK CAPACITIES

FUEL	2250 l, additional tanks optional
HYDRAULIC TANK	2170 l
COOLANT	approx. 120 l
ENGINE OIL	approx. 40 l
CENTRAL LUBRICATION SYSTEM	Automatic central lubrication for equipment and slewing ring, display of fault and empty message via SENCON

## UPPERCARRIAGE

DESIGN	Torsion-resistant box design, precision crafted, steel bushings for boom mounting, service-friendly design, sea climate resistant coating as corrosion protection, camera package (right/rear), SENtrack telematic system
COOLING SYSTEM	Compact 3-circuit cooling system with large cooling capacity, thermostatically regulated fan drive for oil and water cooler reduces energy consumption and noise emissions Fan reversal for easy and regular cleaning
OPTIONS	LED lighting package Swing bearing brake via foot pedal Fire extinguisher Low temperature packages Electrical Hydraulic tank preheating Magnet generator 30/33 kW

## ELECTRIC DRIVE

OPTIONS	Type: 500 kW, standard with 400 V / 50 Hz Transformer Cable reel
---------	------------------------------------------------------------------------





# TECHNICAL DATA, EQUIPMENT

## HYDRAULIC SYSTEM

Load-sensing/ LDUV hydraulic system, hydraulically operated work functions

DELIVERY RATE	4x 570 l/min (load sensing) and 2x 380 l/min
OPERATING PRESSURE	up to 320 bar
CONTROL SYSTEM	Proportional, precision electrical control of work movements, joysticks for work functions, additional functions via switches and foot pedals
SAFETY	Hydraulic circuits safeguarded with safety valves Pipe fracture safety devices Emergency lowering of equipment and cab in case of engine standstill
OPTIONS	Bio-oil filling Tool Control for programming pressure/rate of up to 10 tools Load torque warning with capacity display Overload safeguard with shutdown

## CAB

CAB TYPE	Portcab, elevates up to 11 m
CAB FEATURES	SENNEBOGEN Portcab – large, special cab with excellent all-around visibility, large floor window at the front and powerful heating and climate control  Air-suspended comfort seat and seat belt, additional trainer's seat, control elements in accordance with the latest ergonomic standards, roof and floor window made of bulletproof glass, sun protection for roof and side windows, control and diagnostic system SENCON
OPTIONS	Bullet proof windshield Safety side window and rear window Polycarbonate safety glass Wipers for lower windshield/skylight Sunblinds on the side windows Loudspeaker system with swan neck microphone Radio Cooling box

## SLEWING DRIVE

GEARBOX	Compact planetary gear with bent-axis hydraulic engine, integrated brake valves
SLEW BRAKE	Spring-loaded multi-disk brake
SLEWING RING	3-row slewing ring, sealed. Externally toothed slewing ring with 360° grease drip pan and pinion lubrication
SLEWING SPEED	0-3.6 rpm, variable
TORQUE	750 kNm

Optional: work at a viewing height of up to 22 meters thanks to Skylift cab elevation



<sup>2</sup> Vibration level: Max. Hand/Arm (acc. ISO 5349-2001) < 2.5 m/s<sup>2</sup> and max. Body (acc. ISO/TR 25398: 2006) < 0.5 m/s<sup>2</sup>

# TECHNICAL DATA, EQUIPMENT

## CRAWLER GANTRY

Crawler gantry undercarriage PR400/840 with hydraulic travel drive on each chassis side integrated in the chassis frame by an axial piston engine via compact planetary gears, spring-loaded parking brake, hydraulically ventilated multi-disk brake, flat track shoes 1200 mm

TRAVEL SPEED 0-1.5 km/h

OPTION max. 6 m pylon



Option: crawler gantry

## MOBILE GANTRY

Stable and agile mobile gantry undercarriage PM400/840 with 20 wheel sets and integrated 4-point support, automatic load compensation via corresponding level control for even floor relief. Simple, reliable maneuvering thanks to all-wheel steering on all wheel sets and crab steering, small turning radii

TIRE TYPE 80 x 285/70 R19.5

BRAKES hydraulic

TRAVEL SPEED 0-4 km/h

OPTION max. 6 m pylon



Option: mobile gantry

## RAIL GANTRY

Custom-manufactured rail undercarriage, dimensions according to customer requirements

TRAVEL SPEED 2.5 km/h


OPTION max. 6 m pylon




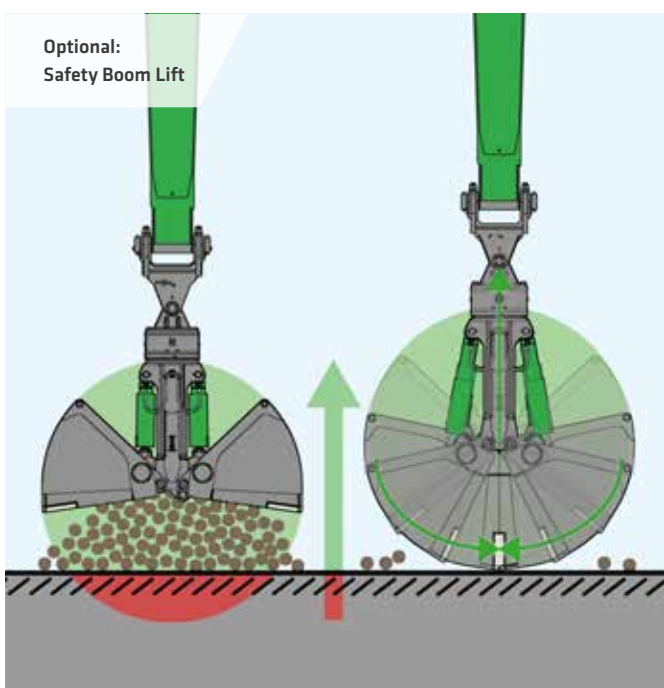
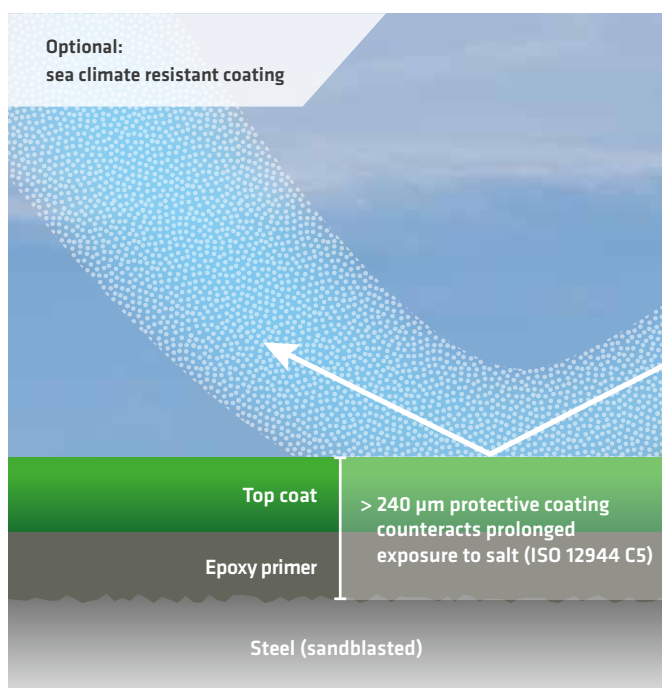
Optional: customized rail gantry



# TECHNICAL DATA, EQUIPMENT

EQUIPMENT 	
REACH	up to 40 m
CYLINDERS	Hydraulic cylinders (incl. hybrid cylinders) with high-quality sealing and guide elements, end position damping, sealed bearing points Sea climate resistant coating of all cylinders, nickel-plated and chromium-plated, pipe fracture safety device (lifting cylinder)
CENTRAL LUBRICATION	Automatic central lubrication system
OPTIONS	Safety Boom Lift for equipment Lift limitation / stick limitation adjustable to the stop settings LED lighting Stick mounted camera

OPERATING DATA 	
OPERATING WEIGHT	420 t
NOTE	Operating weight varies by model and equipment.



# LOAD RATINGS K28 HEAVY LIFT

The load ratings are given as information only. Please contact our regional sales partners or portdivision@sennebogen.de for a detailed project study.



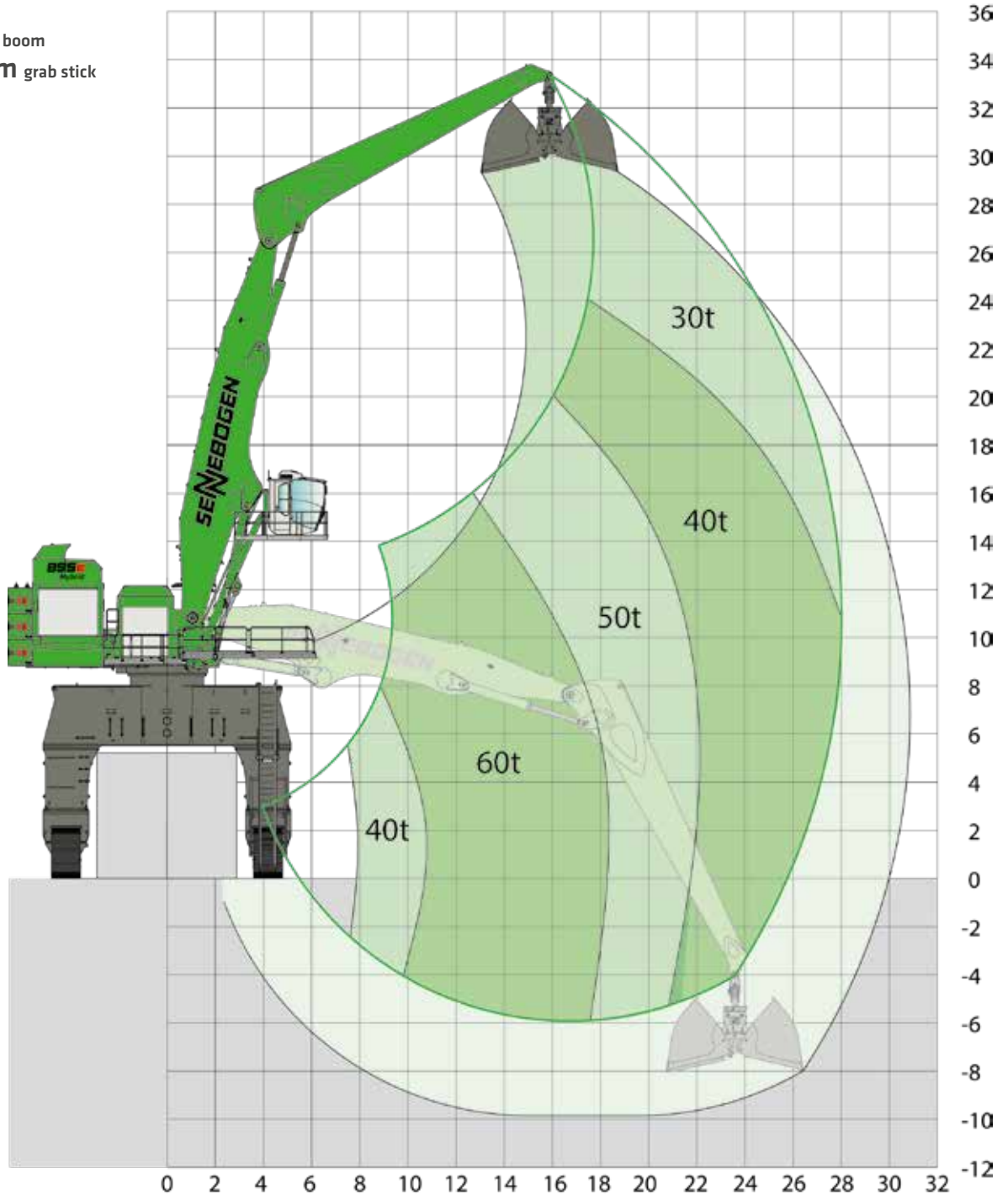
**PR400/840**



**SKYLIFT 1100 with PORTCAB,  
11 m elevation, stepless, hydraulic**



**16 m boom  
13.5 m grab stick**



Machine shown in mirror image

LOAD RATINGS

**Notes:**

All values are in tons (t) and are 75% of the static tipping load or 87% of the hydraulic lifting force in accordance with ISO 10567, and apply at the required operating temperature in the Green Hybrid system. They apply on firm and level ground and 360° slewing. Attachments such as orange peel grabs, magnets, etc. are included in the load capacity. In accordance with harmonized EU standard EN 474-5, hydraulic material handlers used for hoisting must be equipped with pipe fracture safety devices on the hoist cylinders and an overload warning device.



# LOAD RATINGS K32 PORT

The load ratings are given as information only. Please contact our regional sales partners or portdivision@sennebogen.de for a detailed project study.



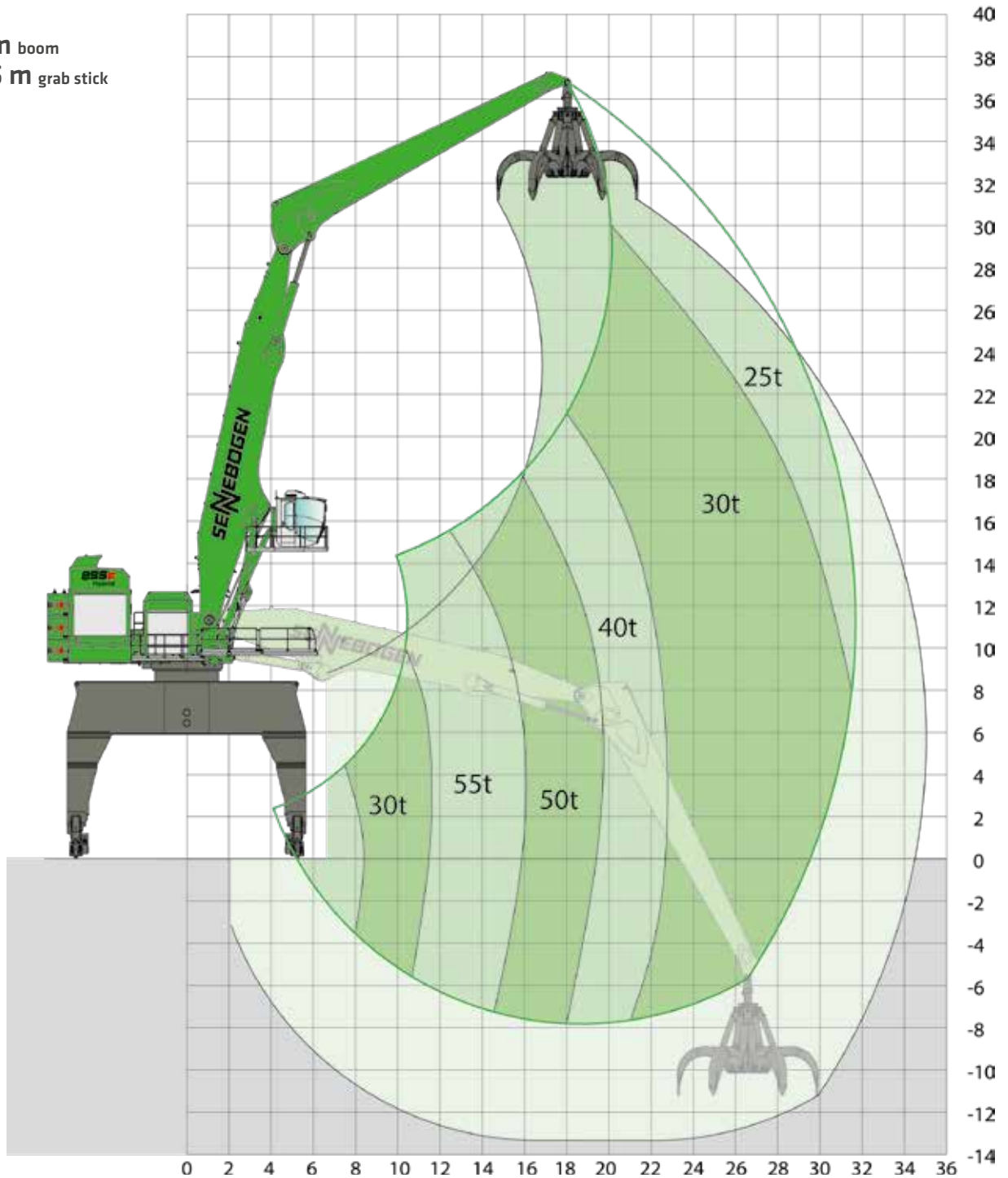
**RAIL GANTRY**



**SKYLIFT 1100 with PORTCAB,  
11 m elevation, stepless, hydraulic**



**18 m boom  
15.5 m grab stick**



Machine shown in mirror image

LOAD RATINGS

**Notes:**

All values are in tons (t) and are 75% of the static tipping load or 87% of the hydraulic lifting force in accordance with ISO 10567, and apply at the required operating temperature in the Green Hybrid system. They apply on firm and level ground and 360° slewing. Attachments such as orange peel grabs, magnets, etc. are included in the load capacity. In accordance with harmonized EU standard EN 474-5, hydraulic material handlers used for hoisting must be equipped with pipe fracture safety devices on the hoist cylinders and an overload warning device.

# LOAD RATINGS K38 PORT

The load ratings are given as information only. Please contact our regional sales partners or portdivision@sennebogen.de for a detailed project study.



PR400/840



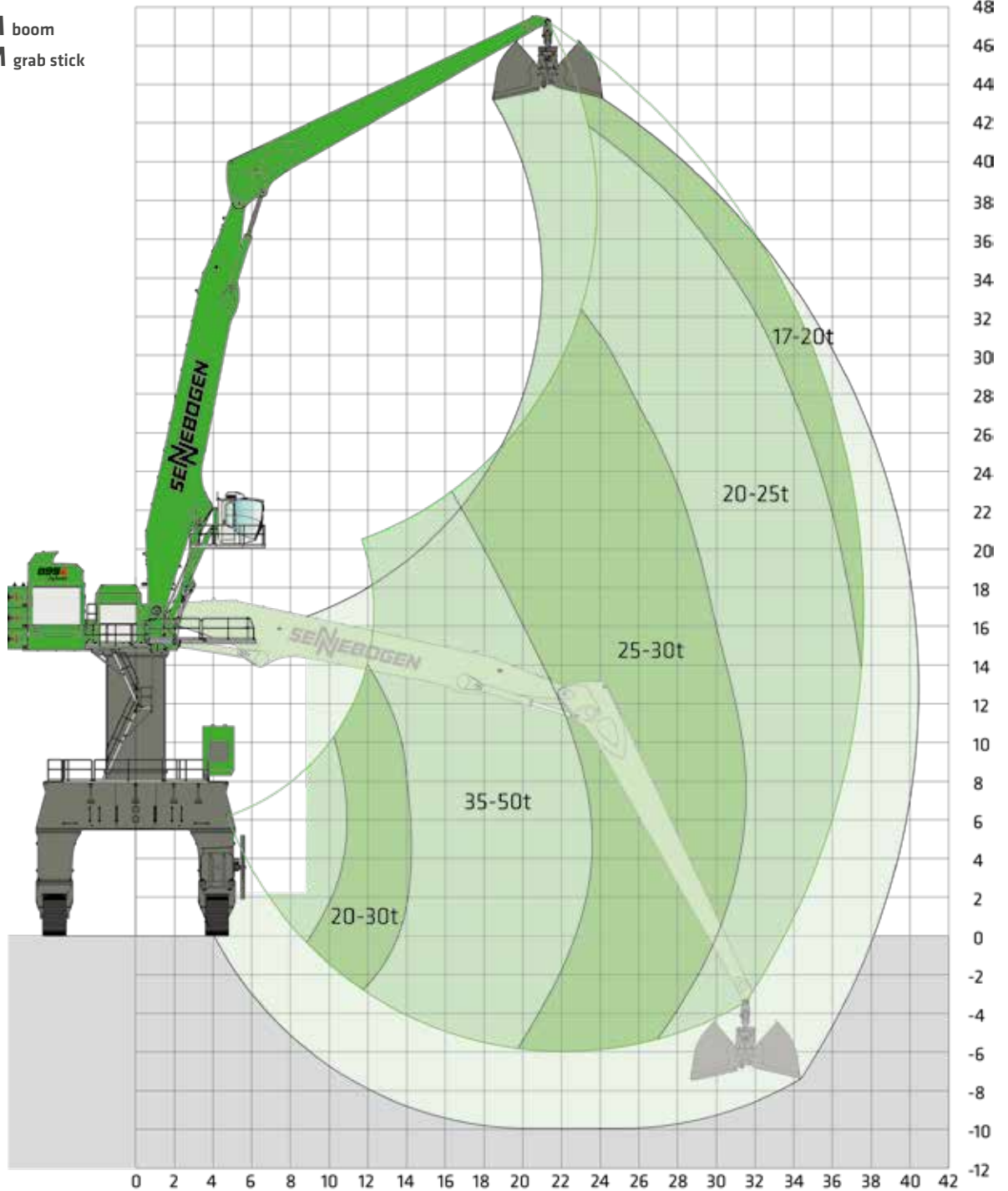
SKYLIFT 1100 with PORTCAB,  
11 m elevation, stepless, hydraulic



Pylon extension  
6.0 m



21.5 M boom  
18.5 M grab stick



Machine shown  
in mirror image

LOAD RATINGS

**Notes:**

All values are in tons (t) and are 75% of the static tipping load or 87% of the hydraulic lifting force in accordance with ISO 10567, and apply at the required operating temperature in the Green Hybrid system. They apply on firm and level ground and 360° slewing. Attachments such as orange peel grabs, magnets, etc. are included in the load capacity. In accordance with harmonized EU standard EN 474-5, hydraulic material handlers used for hoisting must be equipped with pipe fracture safety devices on the hoist cylinders and an overload warning device.



# LOAD RATINGS K38 PORT

The load ratings are given as information only. Please contact our regional sales partners or portdivision@sennebogen.de for a detailed project study.



PM400/840



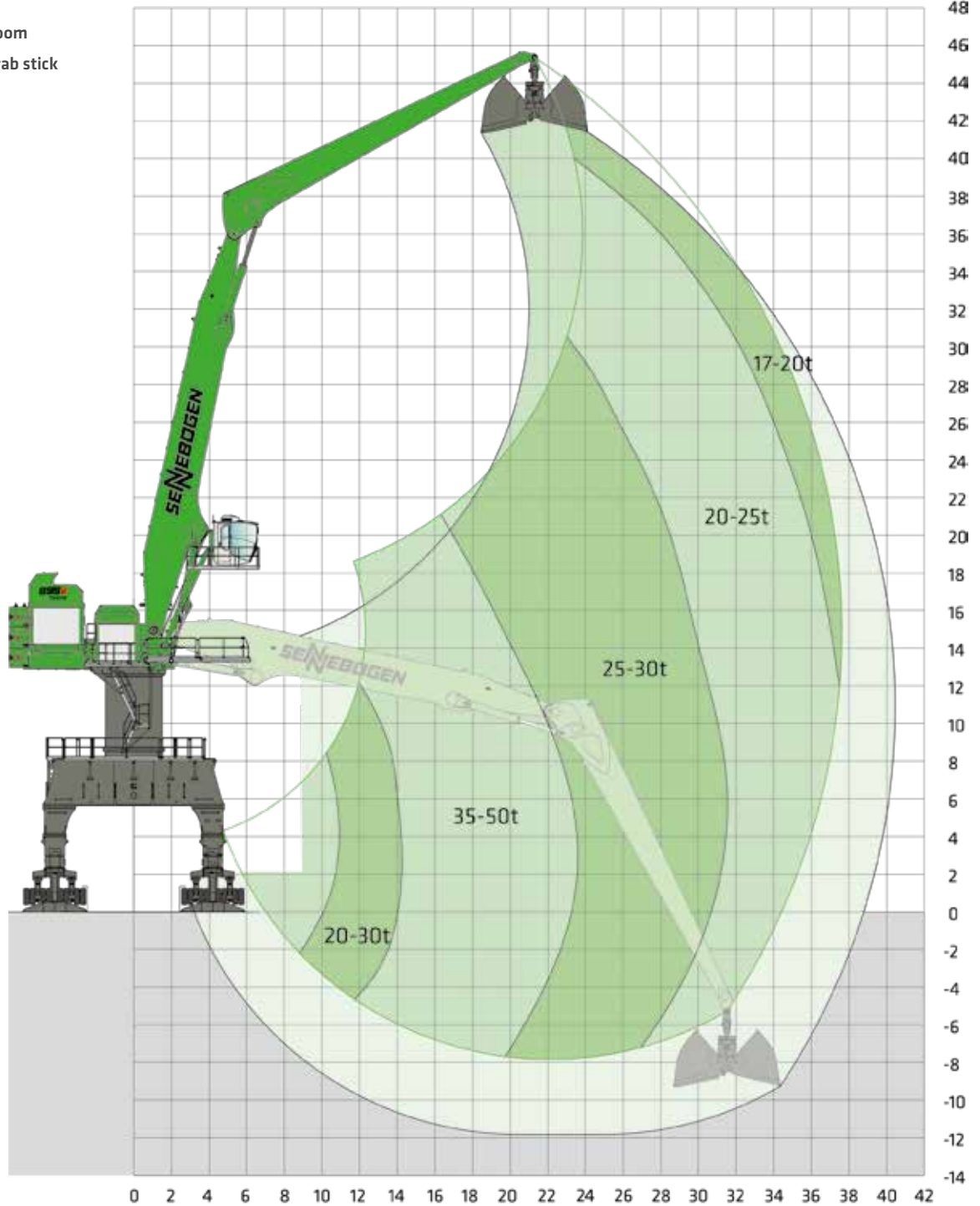
SKYLIFT 1100 with PORTCAB,  
11 m elevation, stepless, hydraulic



Pylon extension  
4.0 m



21.5 M boom  
18.5 M grab stick



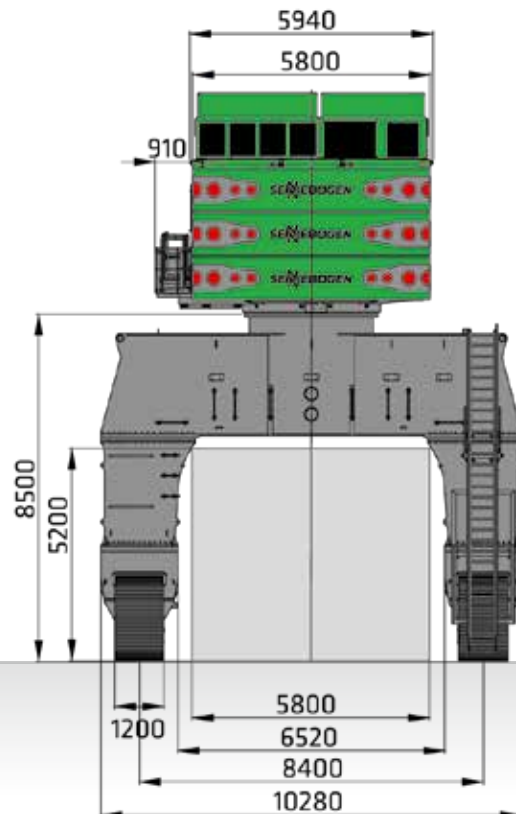
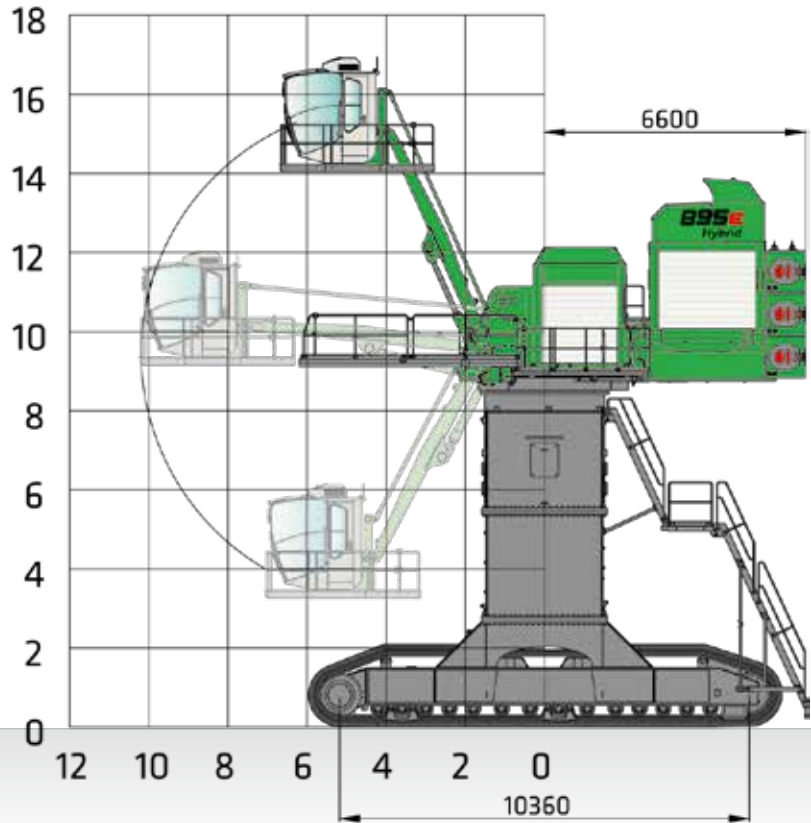
Machine shown  
in mirror image

LOAD RATINGS

**Notes:**  
All values are in tons (t) and are 75% of the static tipping load or 87% of the hydraulic lifting force in accordance with ISO 10567, and apply at the required operating temperature in the Green Hybrid system. They apply on firm and level ground and 360° slewing. Attachments such as orange peel grabs, magnets, etc. are included in the load capacity. In accordance with harmonized EU standard EN 474-5, hydraulic material handlers used for hoisting must be equipped with pipe fracture safety devices on the hoist cylinders and an overload warning device.

# CRAWLER GANTRY DIMENSIONS

CRAWLER GANTRY PR400/840

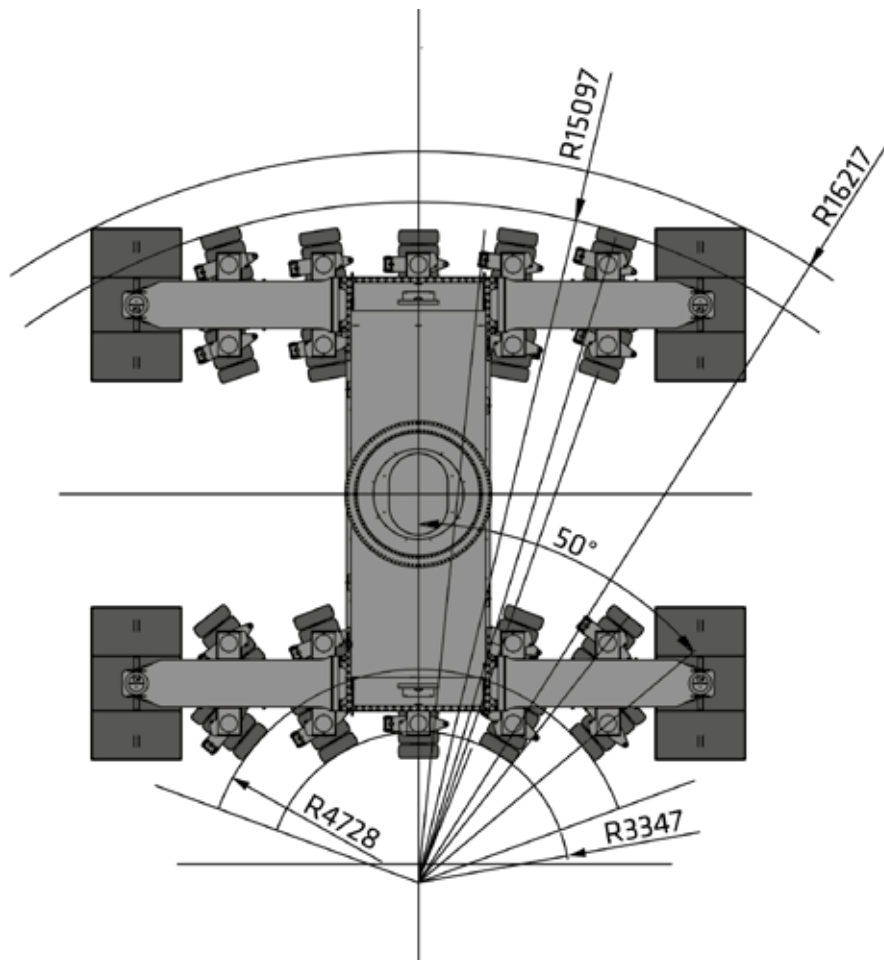
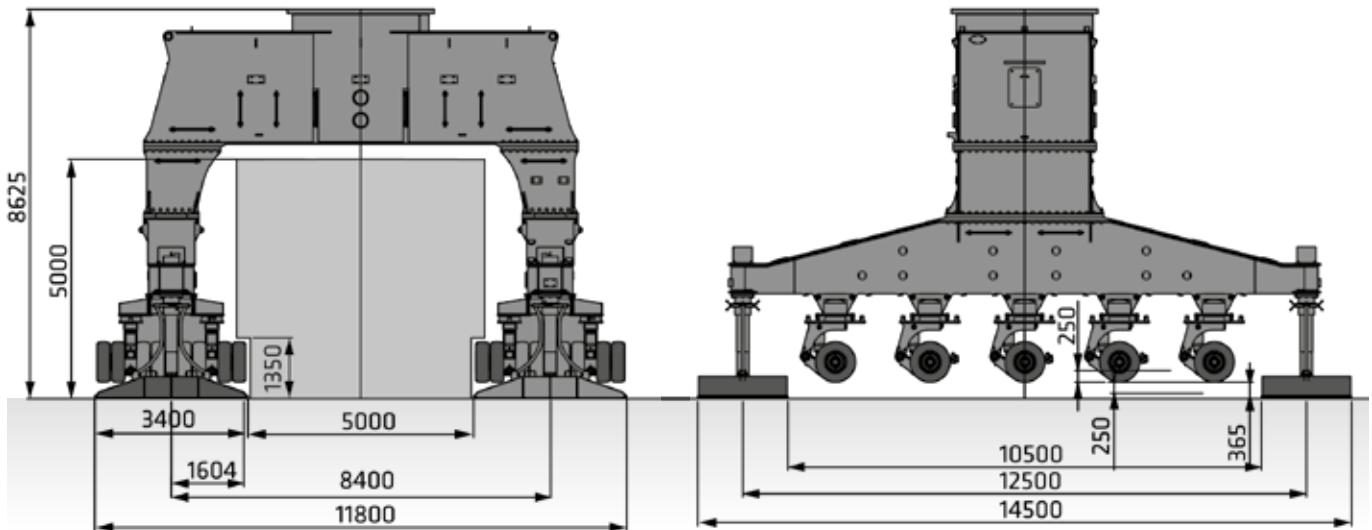


DIMENSIONS



# MOBILE GANTRY DIMENSIONS

## MOBILE GANTRY PM400/840



DIMENSIONS

# The largest material handler in the world.

A large green excavator bucket is shown in the process of dumping a load of light-colored material, likely sand or gravel, onto a massive, conical pile. The pile is the central focus of the image, extending across the lower half. The excavator's arm and bucket are positioned in the upper right quadrant. The background is a clear blue sky with some light clouds. The overall scene is an industrial or construction site.

895 E Hybrid with mobile gantry undercarriage;  
Netherlands







### SENNEBOGEN ACADEMY

Increase your knowledge because success is based on knowledge. In the SENNEBOGEN ACADEMY we place great importance on ensuring it flows powerfully.

➔ [www.sennebogen-academy.com](http://www.sennebogen-academy.com)



### SERVICE AND MAINTENANCE

Comprehensive customer service. And supply of spare parts. Service is a TOP priority for us.

➔ [www.sennebogen.com/customer-service](http://www.sennebogen.com/customer-service)



### SENtrack

Manage your fleet efficiently with SENtrack: Use information that would otherwise stay hidden and increase your efficiency.

➔ [www.sennebogen.com/sentrack](http://www.sennebogen.com/sentrack)



### RENTAL & USED

Discover the unique range of rental machines available from SENNEBOGEN Rental & Used. Find your rental machine here:

➔ [www.sennebogen-rental-used.com](http://www.sennebogen-rental-used.com)

## JOIN OUR OPERATORS' CLUB

The spotlight is on you and your machine! We focus on exclusive information, sharing experiences with other SENNEBOGEN operators as well as fun and enthusiasm.

All the benefits here ➔ [www.sennebogen.com/operators-club](http://www.sennebogen.com/operators-club)





# MOVE BIG THINGS WITH US



over **70**  
years of  
experience

**100 %**  
family company

over **1800**  
experienced  
specialists worldwide

**4**  
production plants  
in Germany

over **180**  
sales and service partners  
worldwide

**27**  
different material  
handlers



Telehandler  
4-5.5 t

Balancer  
130-300 t

Material handler  
17-420 t

Duty cycle crane  
13.5-300 t

Crawler crane  
50-300 t

Telescopic crane  
16-130 t

Port crane  
300 t

# 895E | Hybrid

Bestell-Nr. 299252  
895-E-42210-102210

This catalog describes machine models, the scope of equipment of individual models, and configuration options (standard equipment and optional equipment) of the machines delivered by SENNEBOGEN Maschinenfabrik GmbH. Machine illustrations may contain optional and supplementary equipment. Actual equipment may vary depending on the country to which the machines are delivered, especially in regard to standard and optional equipment. All product designations used may be trademarks of SENNEBOGEN Maschinenfabrik GmbH or other supplying companies, and any use by third parties for their own purposes may violate the rights of the owners.

Please contact your local SENNEBOGEN sales partner for information concerning the equipment variants offered. Requested performance characteristics are only binding if they are expressly stipulated upon conclusion of the contract. Delivery options and technical features are subject to change. All information is supplied without liability. Equipment is subject to change, and rights of advancement are reserved. © SENNEBOGEN Maschinenfabrik GmbH, Straubing, Germany. Reproduction in whole or in part only with written consent of SENNEBOGEN Maschinenfabrik GmbH, Straubing, Germany.

**SENNEBOGEN**  
**Maschinenfabrik GmbH**  
Hebbelstraße 30  
94315 Straubing, Germany


 [www.sennebogen.com](http://www.sennebogen.com)

**MOVE BIG THINGS**

## SALES SENNEBOGEN

Green Line Sales

 +49 (0) 9421 / 540 - 146

 [materialhandling@sennebogen.de](mailto:materialhandling@sennebogen.de)

## SPARE PARTS CENTER

Spare parts orders

 [spareparts@sennebogen.de](mailto:spareparts@sennebogen.de)

## AFTER SALES

Technical support

 [service@sennebogen.de](mailto:service@sennebogen.de)

